



MED-ENG®

EQUIPMENT CATALOG

BOMBTEC®

MODULAR SOLUTIONS FOR HAL, EOD TOOLS AND SEARCH



Med-Eng is proud to introduce the BombTec system of Hook and Line (HAL[®]), EOD Tools and Search equipment.

BombTec is a system of Kits and Modules that enables users to select and deploy with exactly the right equipment for their particular mission.

BombTec kits offer core to enhanced capabilities. Alternatively, end users can build their own customized solutions based on Modules - or Kits with Modules - to meet their specific requirements.

The composition of the Kits is based on decades of EOD and Bomb Technician experience of Med-Eng team members.

BOMBTEC [®]		
Hook & Line	Tools	Search
Kits <ul style="list-style-type: none"> • Core • Lightweight Core • Standard • Backpack • Maritime Backpack 	Kits <ul style="list-style-type: none"> • Individual • Core • Standard • Enhanced 	Kits <ul style="list-style-type: none"> • Core • Standard • Enhanced
47 Modules	31 Modules	8 Modules



CONTENTS

1 HOOK & LINE

- 3 Hook & Line Kits
- 9 HAL Tactical
- 10 HAL Tactical Modules
- 12 HAL Modules

56 SEARCH

- 58 Search Kits
- 68 Search Modules

77 TOOLS

- 78 Tool Kits
- 91 Tool Modules

123 CARRIERS

- 124 Pouches & Packs

HOOK & LINE



HOOK AND LINE® (HAL) INTRODUCTION



Designed by EOD professionals to meet the modern threat, the Med-Eng Hook and Line (HAL®) BombTec™ Rigging System provides a comprehensive semi-remote access, handling and removal capability for all EOD/IEDD tasks and scenarios.

The Med-Eng BombTec™ system enable EOD Teams and Search Operators to meet their specific operational requirements by selecting a set of modules based on core and enhanced capabilities.

This Section outlines the Hook and Line which provide a core capability, allowing the End User to select a comprehensive equipment set with the minimum of fuss. Each of these Kits can be enhanced with the addition of other Hook and Line Modules. In addition, the HAL operative can customise the kit by adding additional HAL, search or tool modules to their kit.

NOTE: The BombTec system includes hundreds of components that are manufactured by Med-Eng or sourced from third parties. Every attempt is made to maintain the accuracy of imagery and information in this catalog. However, over time, some components will change or be discontinued at the sole discretion of Med-Eng or its suppliers. Accordingly, equipment shown in this catalog, including specifications and appearance, is subject to change without notice and may differ from the illustrative depictions. For example, weights listed (which include components, pouches and carriers, unless otherwise indicated) may vary. **It is the intention of Med-Eng to provide the capability offered by each component, regardless of product evolution such as colour or physical attributes.** If you have questions about the size, weight, composition or appearance of equipment in this catalog, please contact your authorized Med-Eng representative.

The HAL Product Specifications take precedence over this Catalogue and are available from your authorized Med-Eng representative. Please refer to the Product Specifications when ordering or inspecting customer orders.

HAL[®]
KITS

HAL CORE KIT



HAL Core Kit (White Line)



HAL Core Kit (Green Line)



HAL Core Kit (Orange Line)

P/N 8005231 (Black Line)
 P/N 8005232 (White Line)
 P/N 8005233 (Green Line)
 P/N 8005234 (Orange Line)

HAL Core Kit (Black Line)

The BombTec HAL Core Kit provides the basic Hook & Line capabilities to conduct simple IEDD tasks. It can be used to form the foundation for a custom Hook & Line kit with the addition of HAL modules and your choice of carrier.

It is equipped with one of four colour choices of Main Line; black, white, or high-visibility green or orange. The Main Line is carried in a robust protective Reel Bag, fitted with a clear plastic viewing window to give the operator an instant view of the contents without having to open the bag. It also has a pair of external pockets. This bag can be used as a carry bag to bring tools downrange.

Each of the remaining Modules which make up the HAL Core Kit are supplied in a rugged, abrasion-resistant fabric pouch featuring a double slider zipper closure, a mesh pocket on the interior lid, and elastic loops on the interior base. As with the modular approach to the entire BombTec product line, each pouch features Velcro Hook backing and two MOLLE straps with snaps to provide the flexibility to affix modules to the interior or exterior of the BombTec Backpack, to MOLLE loops on Med-Eng Bomb Suits, or onto to most other tactical equipment.

Collectively, the Modules are carried in an External Pouch 33, which is made from rugged, abrasion-resistant fabric, and features a pass-through sleeve on the interior lid. The interior base has ample room and features a drawstring closure. Side closure zippers can be opened to allow the pouch depth to expand from 64mm (2.5") to 127mm (5") in order to accommodate larger product if required. The rear of the pouch features four MOLLE straps with snaps to provide a variety of attachment options, and the pouch is secured with two side release buckles.

- 1x Line Module
- 1x Self-Opening Pulley 2pk Module
- 1x Hook Module
- 1x Carabiner 2pk Module
- 1x Basic Clamp Module
- 1x Endless Loop Module
- 1x User Guide
- 1x Pouch 33
- 1x Reel Bag

All Modules in Pouch 33

Dimensions (L x W x H)	279mm x 127mm x 254mm	11" x 5" x 10"
Weight	2.85kg	6.28lb

Main Line in Reel Bag

Dimensions (L x W x H)	394mm x 330mm x 197mm	15.5" x 13" x 7.75"
Weight	6.00kg	13.23lb

Total Weight	8.85kg	19.51lb	P/N 8005235
--------------	--------	---------	-------------

HAL LIGHTWEIGHT CORE KIT



P/N 8005235

The BombTec HAL Lightweight Core Kit provides the basic Hook & Line capabilities to conduct simple IEDD tasks. It can be used to form the foundation for a custom Hook & Line kit with the addition of HAL modules and your choice of carrier.

It is equipped with a Lightweight Main Line for increased portability. The Lightweight Line is carried in an External Pouch 33, which is made from rugged, abrasion-resistant fabric, and features a pass-through sleeve on the interior lid. The interior base has ample room and features a drawstring closure. Side closure zippers can be opened to allow the pouch depth to expand from 64mm (2.5") to 127mm (5") in order to accommodate larger product if required. The rear of the pouch features four MOLLE straps with snaps to provide a variety of attachment options, and the pouch is secured with two side release buckles.

Each of the remaining Modules which make up the HAL Core Kit are supplied in a rugged, abrasion-resistant fabric pouch featuring a double slider zipper closure, a mesh pocket on the interior lid, and elastic loops on the interior base. As with the modular approach to the entire BombTec product line, each pouch features Velcro Hook backing and two MOLLE straps with snaps to provide the flexibility to affix modules to the interior or exterior of the BombTec Backpack, to MOLLE loops on Med-Eng Bomb Suits, or onto to most other tactical equipment.

Collectively, the Modules are carried in a second External Pouch 33.

- 1x Lightweight Line Module
- 1x Self-Opening Pulley 2pk Module
- 1x Hook Module
- 1x Carabiner 2pk Module
- 1x Basic Clamp Module
- 1x Endless Loop Module
- 1x User Guide
- 2x External Pouch 33

All Modules in Pouch 33

Dimensions (L x W x H)	279mm x 127mm x 254mm	11" x 5" x 10"
Weight	2.85kg	6.28lb

Lightweight Line in External Pouch 33

Dimensions (L x W x H)	279mm x 127mm x 254mm	11" x 5" x 10"
Weight	2.70kg	5.95lb

Total Weight	5.55kg	12.24lb
--------------	--------	---------

HAL STANDARD KIT



P/N 8005503

The BombTec HAL Standard Kit is a fully comprehensive EOD/IEDD rigging kit. It provides the capability to conduct IEDD tasks involving buildings, structures, vehicles and locations. In particular the 2 colour-coded lines allow more advanced techniques to be conducted than possible with a single line kit.

The kit includes components for attaching lines to objects and anchoring pulleys to walls, floors, windows and door frames. The components are also suitable for assisting entry into vehicles and for removing items discovered inside. Changes in direction of the line to give lift, avoid obstacles or to allow the Operator to gain cover are achieved by use of self-opening pulleys.

Each of the Modules which make up the HAL Standard Kit are supplied in a rugged, abrasion-resistant fabric pouch featuring a double slider zipper closure, a mesh pocket on the interior lid, and elastic loops on the interior base. As with the modular approach to the entire BombTec product line, each pouch features Velcro Hook backing and two MOLLE straps with snaps to provide the flexibility to affix modules to the interior or exterior of the BombTec Backpack, to MOLLE loops on Med-Eng Bomb Suits, or onto to most other tactical equipment.

The HAL Standard Kit is supplied as standard in a rugged Hard-Case. Internally the case is covered in Velcro® strips permitting each of the modules to be secured to the case. Velcro straps along the spine on the top and bottom allow for securing poles and other long objects.

The Main Lines are each carried in a robust protective Reel Bag, fitted with a clear plastic viewing window to give the operator an instant view of the line colour without having to open the bag. It also has a pair of external pockets. This bag can be used as a carry bag to bring tools downrange.

- 1x Black Line Module
- 1x White Line Module
- 1x Self-Opening Pulley 5pk Module
- 2x Hook Module
- 1x Carabiner 5pk Module
- 1x Locking Carabiner 5pk Module
- 1x Reach Module
- 1x Basic Clamp Module
- 1x Clamp Module
- 1x Black Gated Cutter Module
- 1x Suction Cup Module
- 1x Adhesive Anchor Module
- 1x Ground Anchor Module
- 1x Piton Module
- 1x Wood Anchor Module
- 1x Door Anchor Module
- 1x Wedge Module
- 1x Endless Loop Module
- 1x Sling Module
- 1x Elastic Cord Module
- 1x Sledge Module
- 1x Belt Sling Module
- 1x User Guide
- Module Pouches
- 2x Reel Bags
- 1x Hard-Case

Hard Case with Components

Dimensions (L x W x H)	1391mm x 419mm x 151mm	55.7" x 16.5" x 5.9"
Weight	33.36kg	73.55lb

Reel Bag with Line

Dimensions (L x W x H)	394mm x 330mm x 197mm	15.5" x 13" x 7.75"
Weight	6.00kg	13.22lb

Total Weight	45.36kg	100lb
---------------------	----------------	--------------



HAL BACKPACK KIT



P/N 8005554

The BombTec HAL Backpack is a tactical EOD/IEDD rigging kit which combines maximum capability with exceptional portability. It is specifically designed for EOD/IEDD tasks where speedy and straightforward deployment of equipment is a critical success factor.

FEATURES

- Dedicated stowage that can be reconfigured by the user
- Single high strength, low stretch Kevlar line
- Detachable pouches
- Space to carry other EOD/IEDD equipment
- Glow-in-the-Dark icon based cards for ease of content identification
- Over 90 HAL components

The custom designed BombTec backpack enables user configurable solutions for carrying equipment on short and long duration tasks. It features a generous array of Molle attachment points on the exterior, and the interior is lined with Velcro Loop.

Each of the Modules which make up the HAL Backpack Kit are supplied in a rugged, abrasion-resistant fabric pouch featuring a double slider zipper closure, a mesh pocket on the interior lid, and elastic loops on the interior base. As with the modular approach to the entire BombTec product line, each pouch features Velcro Hook backing and two MOLLE straps with snaps to provide the flexibility to affix modules to the interior or exterior of the BombTec Backpack, to MOLLE loops on Med-Eng Bomb Suits, or onto to most other tactical equipment.

- 1x Lightweight Line Module
- 1x Self-Opening Pulley 5pk Module
- 2x Hook Module
- 1x Carabiner 5pk Module
- 1x Locking Carabiner 5pk Module
- 1x Lightweight Reach Module
- 1x Basic Clamp Module
- 1x Clamp Module
- 1x Black Gated Cutter Module
- 1x Suction Cup Module
- 1x Adhesive Anchor Module
- 1x Piton Module
- 1x Crevasse Anchor Module
- 1x Wood Anchor Module
- 1x Wedge Module
- 1x Endless Loop Module
- 1x Sling Module
- 1x Elastic Cord Module
- 1x Belt Sling Module
- Module Pouches
- 1x BombTec Backpack

Backpack with Components (As shipped)*

Dimensions (L x W x H)	565mm x 387mm x 229mm	22.25" x 15.25" x 9"
Weight	15.53kg	34.24lb

* Listed weight does not include the Tape, Glue and Tie Module, which is packaged separately at time of shipping. This module contains consumable items which are delivered in bulk and are added to the Backpack by the user as needed.

HAL MARITIME BACKPACK KIT



P/N 8005555

The HAL® Maritime Backpack is a fully comprehensive EOD/IEDD rigging kit that has been designed to provide semi-remote access, handling and removal capability for EOD/IEDD tasks and scenarios in both underwater and above water (ships, etc.) environments. This System is designed to provide Maritime Operations Bomb Technicians (MOBTs) the tools they need to complete their tasks in a safe and efficient manner in complex terrain. MOBTs will work in open or flowing fresh or saltwater including but not limited to rivers, lakes, oceans, and associated docks/harbours. Threats may be underneath ships or piers, buried in substrate, and may be subject to partial or total ice coverage. MOBTs will work on land near open or flowing bodies of water including but not limited to docks, boats/ships, bridges, or rocky or sandy beaches in hot/cold and good/bad weather with operations often exceeding 24 hours.

The custom designed BombTec backpack enables user configurable solutions for carrying equipment on short and long duration tasks. It features a generous array of Molle attachment points on the exterior, and the interior is lined with Velcro Loop. Each of the Modules which make up the HAL Maritime Backpack Kit are supplied in a rugged, abrasion-resistant fabric pouch featuring a double slider zipper closure, a mesh pocket on the interior lid, and elastic loops on the interior base. As with the modular approach to the entire BombTec product line, each pouch features Velcro Hook backing and two MOLLE straps with snaps to provide the flexibility to affix modules to the interior or exterior of the BombTec Backpack, to MOLLE loops on Med-Eng Bomb Suits, or onto to most other tactical equipment.

The Hi-visibility Green Main Line is carried in a robust protective Reel Bag, fitted with a clear plastic viewing window to give the operator an instant view of the contents without having to open the bag. It also has a pair of external pockets. This bag can be used as a carry bag to bring tools downrange.

- 1x High-Visibility Green Line Module
- 1x Self-Opening Pulley 2pk Module
- 1x Hook Module
- 1x Carabiner 5pk Module
- 1x Locking Carabiner 5pk Module
- 1x Lightweight Reach Module
- 1x Green Gated Cutter Module
- 1x Suction Cup Module
- 1x High-Visibility Endless Loop Module
- 1x Elastic Cord Module
- 1x Belt Sling Module
- 1x Rigging Tools Module
- 1x Survey Line Module
- 1x High-Visibility Branch Line Module
- 1x Marine Marking Module
- 1x Underwater Collection Module
- 1x Lockout/Tagout Module
- 1x Light Stick Module
- 1x User Guide
- Module Pouches
- 1x Reel Bag
- 1x Backpack

Backpack with Components (As shipped)*

Dimensions (L x W x H)	565mm x 387mm x 229mm	22.25" x 15.25" x 9"
Weight	21.75kg	47.95lb

Reel Bag with Line

Dimensions (L x W x H)	394mm x 330mm x 197mm	15.5" x 13" x 7.75"
Weight	6.00kg	13.23lb

Total Weight*	25.85kg	56.99lb
----------------------	----------------	----------------

* Listed weight does not include the Light Stick Module, which is packaged separately at time of shipping. This module contains consumable items which are delivered in bulk and are added to the Backpack by the user as needed.

HAL TACTICAL KIT



HAL Tactical Core Kit with all optional Modular Equipment Packs shown.

P/N 4975221 Core Leg Kit

The components offered are designed for the needs of Tactical, SWAT, Dismounted IED, IEDD, Route Clearance and other tasks where the operator requires a small but highly specialized set of Hook and Line tools. This highly reliable system is based on a core kit supplemented by a series of Modular Equipment Packs (MEPs). This makes the HAL Tactical modular, adaptable and keeps it as compact as possible. The components are packaged in specialized Modular Equipment Packs, so end users can purchase the tools they need and customize the kit by selecting only the tools needed when they deploy into action. The HAL Tactical compact design and low-profile leg mount provide excellent mobility and keep the user's hands free for other tasks. The carry bag can be quickly attached or detached and includes molly webbing for attaching various tools.

This kit forms the basis on which to build on for custom, task specific, or user defined HAL Tactical Kits. The Core Kit is made up of three Modules comprised of over 20 components. Found within the Core Kit is a high strength Line Module; Basic Clamp & Manipulation Module and an Anchor Module.

The Leg Bag provides the ability to carry the HAL Tactical tools in an easily accessible location while being minimally intrusive to the user. The main zipper compartment houses small pouches which may be repositioned across the Velcro-lined surface to suit individual requirements. In addition, the pouch includes several external pockets with Velcro closures, ideal for frequently accessed tools, as well as an array of elastic MOLLE straps and more internal pockets.

Designed for dismounted operations, an integrated split belt loop acts to transfer the weight of the kit to the hips while two leg straps keep the kit firmly secured to the thigh. By removing the leg straps and split belt loop, two vertical straps with snap closures are exposed, allowing the main pouch to be worn on compatible MOLLE systems such as might be found on combat vests or plate carriers.

Each of the Modules which make up the HAL Tactical Kit are supplied in a rugged, abrasion-resistant fabric pouch featuring a double slider zipper closure, a mesh pocket on the interior lid, and elastic loops on the interior base. As with the modular approach to the entire BombTec product line, each pouch features Velcro Hook backing and two MOLLE straps with snaps to provide the flexibility to affix modules to the interior or exterior of BombTec carriers, to MOLLE loops on Med-Eng Bomb Suits, or onto to most other tactical equipment.

Dimensions (L x W x H)	190mm x 250mm x 125mm	7.5in x 10in x 5in
Weight	3.10kg	6.83lb

Weight of the HAL Tactical kit includes all Modular Equipment Packs.

HAL Tactical Core Kit

- 1x Handheld Spool Holder
- 1x Spool (with 61m of 2.3mm Dyneema line)
- 1x Hook 1in
- 1x Hook Gated
- 1x Mini Line Puller
- Module Pouch

Basic Clamp & Manipulation Module

- 2x Locking Carabiner
- 1x Roller Carabiner
- 10x Cable Tie
- 1x Mini S.O. Pulley
- 1x Mini Splitter Ball
- 1x Forceps 4"
- Module Pouch

Anchor Module

- 5x Adhesive Anchor
- 2x Ground Anchor
- 1x Rope Loop, 0.25m
- 2x Rope Loop, 0.5m
- 3x Wood Anchor
- Module Pouch

User Guide

Leg Bag



HAL TACTICAL MODULES

HAL TACTICAL, CLAMP MODULE



This Clamping Module features a miniature version of the highly regarded HAL® Alligator Grip with the same robust design features found on the original.

P/N 4974989

HAL TACTICAL, GUIDANCE MODULE



The Guidance Module features 2 additional Mini Self-Opening Pulleys (with splitter balls) for increased ability to change direction when moving a suspect package to a safe area. The splitter balls can be stored directly on the self-opening pulleys to minimize the risk of losing them.

P/N 4974993

HAL TACTICAL, VISIBILITY MODULE



The Visibility Module features an 83mm diameter mirror extendable to 750mm, as well as a compact, water resistant push button operated LED flashlight.

P/N 4974990

HAL TACTICAL, REACH BASIC MODULE



The Basic Reach Module features a 1.83 m (6 ft) hook setter pole with a collapsed length of 240 mm (9.5 in), allowing it to fit inside the Leg Bag.

P/N 4975202

HAL TACTICAL, HOOK GRAPPLING MODULE



This module features a high-strength, collapsible, 3-arm grappling hook. The tip of each arm is sharpened to a point to facilitate piercing of fabric bags and the arms are quickly locked open/closed, allowing for rapid deployment whilst taking up minimal space when stored.

P/N 4974995

HAL TACTICAL MODULES



HAL TACTICAL, DEMINING MODULE

The Demining Module includes a collapsible shovel and non-magnetic mine probe with detachable segments.

P/N 4974994



HAL TACTICAL, MULTI-TOOL MODULE

The Multi-Tool Module features a strap cutter, lockable tweezers, and an EOD multi-tool which includes both a crimper and a punch among several other standard tools. Additional tools include a strap cutter and tweezers.

P/N 4974992



HAL TACTICAL, LINE MODULE

The primary component of this module is the 2.3 mm high-strength Dyneema core main line. The line is wound onto a lightweight spool which is fastened to a hand-held holder that allows for quick removal of the spool should an additional line be needed. This module includes both a standard and gated hook and a custom mini line puller designed to work with the smaller diameter line.

P/N 4974986



HAL TACTICAL, BASIC CLAMP & MANIPULATION MODULE

The primary component within the basic clamp and manipulation module is the mini self-opening pulley. Designed using the same criteria as the larger equivalent in the Core Kits, this smaller version incorporates a quarter turn locking knob with visual locked/unlocked cues and a sheave sized to guide the 2.3 mm main line. Also included in this module are a scaled down splitter ball, a multi-purpose revolving carabiner, and an assortment of basic clamping components.

P/N 4974987



HAL TACTICAL, ANCHOR MODULE

This module provides basic anchoring capabilities. Lightweight, high-strength ground anchors are the core components of this module along with the 2.3 mm diameter rope loops of two different lengths. Also included are adhesive anchors and screw eyes which are common to all core HAL kits.

P/N 4974988

HAL[®] MODULES



HAL MODULES

This Section provides a number of Hook and Line Modules which group functional tools into an individual pouch or carrier (size dependent). Certain Modules are incorporated into the larger Kits detailed in the previous pages. In addition, the HAL operative can customise the kit by adding additional HAL, search or tool modules to their kit.

MOVE

This core function is provided by the use of high grade, low stretch lines. Objects weighing up to 150kg (300lb) can be moved with relative ease using the standard Hook and Line kits.

MANIPULATE

Provides the core function changing direction. When pulleys are used allows the Technician to change the orientation of a given item reducing the threat. The Technician can utilise the pulleys to use mechanical advantage when lifting a load.

ATTACH

This function includes the securing of the line to a variety of fittings or objects using its own snap hook or the wide variety of attachment options available in the Med-Eng Hook and Line System.

ANCHOR

This function covers the use of anchoring points to facilitate movement in a particular direction. When pulleys are used as anchor points, they provide low friction changes to line direction to be achieved.

REACH

Extended reach is important:

- Attachment: If national rules permit, lines can be attached to objects, munitions or other suspect devices using extended reach. A stand-off distance achieved using this method gives an increased factor of safety to the Bomb Technician in the event of detonation.
- Anchoring: High anchor points, or anchor points that are not easily accessible when wearing an EOD Bomb Suit can be rigged quickly during an operational task using extended reach devices.

ACCESS

This function when used in conjunction with other Hook and Line components, enables the Technician safe access into enclosed areas or packages.

LIFT

This function when used in conjunction with other Hook and Line components provides the Technician with the means to raise or lift items of interest which may include the lid to the engine compartment.

SPECIAL

The equipment in this category are other supplied tools and equipment which has been produced for unique applications.

MOVE LINE MODULE

- P/N 4985779 Black Line
- P/N 4985780 White Line
- P/N 4985781 High-Visibility Green Line
- P/N 4985782 High-Visibility Orange Line



Black Line Module



High-Visibility Green Line



High-Visibility Orange Line



The Line Module is supplied in four configurations, the difference is a different coloured line: Black; White; Green and Orange line. At the time of ordering the customer can choose which Line Module is ordered. The green and orange lines offer high visibility options in addition, these lines offer suitable below water visual properties where the orange line is suitable for shallow waters and the green for deeper.

Each Line Module provides the core HAL function of movement. The Line Module includes a main line; cable reel, line puller and a reel bag. The 120m (131.2yd.), 5.5mm (.22in), low-stretch main line has an Aramid core and a polyester protective overbraid. The line is terminated with a stainless-steel snap-shackle which enables the Technician to attach the main line directly to an item or another piece of HAL equipment.

The Reel is mounted on a floor-standing frame which incorporates a carrying handle. It is suitable for storing and deploying the 120m line. The steel reel has a rewind handle, a friction stopper and an adjustable, fully floating brake to control the run-out rate. The reel has 4 rubber feet on its side which provides the option of laying the reel on its side.

The Line Puller has a T-bar style pulling handle with diminishing taper ribbed cleats, sized for 3 to 6mm and 4 to 8 mm diameter line and provides the Technician a positive handle when pulling heavy loads.

The Reel Bag is robust protective bag, fitted with a clear plastic viewing window to give the operator an instant view of the contents without having to open the bag. It also has a pair of external pockets. This bag can be used as a carry bag to bring tools downrange.

- 1x 120m Mainline w/Reel (Black, White, Green or Orange)
- 1x Line Puller
- Reel Bag



Reel bag shown for illustration purposes.

Dimensions (L x W x H)	394mm x 330mm x 197mm	15.5" x 13" x 7.75"
Weight	6.00kg	13.22lb

MOVE LIGHTWEIGHT LINE MODULE



P/N 4985783

The Black Lightweight Line Module provides the core HAL function of movement. The incorporated snap Hook enables the Technician to attach the main line directly to an item or another piece of HAL equipment. The lighter weight makes this line more portable than the standard Main Line but with a reduced working load.

- 1x 100m Main Line
- 1x Line Puller
- External Pouch 33

The 100m Main Line is 4.5mm in diameter, low-stretch and has an Aramid core and a polyester protective overbraid. The line is terminated with a stainless-steel snap-shackle.

The hand-held reel is designed specifically for deploying and winding using a 4.5mm diameter line. The compact design enables the line to be stored easily without the risk of tangling.

A T-bar style pulling handle with diminishing taper ribbed cleats, sized for 3mm to 6mm and 4mm to 8 mm diameter line.

The External Pouch 33 is made from rugged, abrasion-resistant fabric, and features a pass-through sleeve on the interior lid. The interior base has ample room and features a drawstring closure. Side closure zippers can be opened to allow the pouch depth to expand from 64mm (2.5") to 127mm (5") in order to accommodate larger product if required. The rear of the pouch features four MOLLE straps with snaps to provide a variety of attachment options, and the pouch is secured with two side release buckles.

Dimensions (L x W x H)	279mm x 127mm x 254mm	11" x 5" x 10"
Weight	2.70kg	5.95lb

MOVE SLEDGE MODULE



P/N 4985812

The Sledge Module provides the core HAL function of Movement. The Sledge is used in conjunction with the main line to manoeuvre packages over rough terrain and around other obstructions.

The Sledge is constructed from nylon/Cordura fabric and integral flexible polypropylene reinforcing panels. When assembled it is held together by flaps faced with Velcro®.

The sledge mesh pouch is made of nylon mesh and features a hook and loop closure to retain the sledge securely for storage. The pouch includes hook and loop tabs to secure it to the inside of the hard case and may be positioned in varying positions along the long edge of the case interior.

- 1x Transport Sledge
- Mesh Carrier

Dimensions (L x W x H)		
Flat (unassembled)	485mm x 590mm x 10mm	19.2" x 23.2" x 0.4"
Assembled	485mm x 590mm x 170mm	19.2" x 23.2" x 6.7"
Weight	2.50kg	5.50lb

MOVE HIGH-VISIBILITY BRANCH LINE MODULE



P/N 4985822

The High-Visibility Branch Line Module provides the core HAL function of movement and attachment. In addition to normal application, the orange high visibility line is suitable for use in shallow waters.

The orange Action Line is 60m in length and has a 5.5mm Dyneema core with a polyester overbraid. The line is terminated at each end with soft loops for attachment of carabiners, pulleys, hooks, etc.

The Line Branch is a clamp with an eye which secures onto a 5.5mm diameter line. The clamping function is operated by a thumb-wheel screw. The Line Branch can be clamped securely onto the main line at any point to provide a fixing point for a second line thereby permitting a sideways pull, attachment of a pulley or anchoring the line.

This pouch is made from rugged, abrasion-resistant fabric and features a mesh pocket on the interior lid, and elastic loops on the interior base. The pouch has a double slider zipper closure. The rear of the pouch features Velcro Hook and two MOLLE straps with snaps to provide a variety of attachment options.

- 1x Orange Action Line
- 1x Line Branch
- Internal Pouch 24



Dimensions (L x W x H)	180mm x 360mm x 75mm	7" x 14" x 3"
Weight	2.35kg	5.18lb



MANIPULATE SELF-OPENING PULLEY MODULE



P/N 4985784 2 Pack
P/N 4985785 5 Pack

2 PACK

The Self-Opening Pulley Module (2 pack) provides the core HAL function of manipulation, enabling the Operator to effect changes of direction when relocating an object from one location to another. The Technician can utilize the pulleys to use mechanical advantage when lifting a load.

The pulley has a selectable release (break-away) mechanism that frees the line at a pre-determined point. The pulley block has a swivel snap shackle at the top for quick and easy attachment. The pulley has a locking mechanism allowing it to be used as a normal fixed pulley.

The Splitter Ball is a plastic and metal device that attaches to the main line at any chosen point and opens the cheek-plate on the pulley.

This pouch is made from rugged, abrasion-resistant fabric and features a mesh pocket on the interior lid, and elastic loops on the interior base. The pouch has a double slider zipper closure. The rear of the pouch features Velcro Hook and two MOLLE straps with snaps to provide a variety of attachment options.



- 2x Self-Opening Pulley
- 1x Splitter Ball
- Internal Pouch 12

Dimensions (L x W x H)	90mm x 180mm x 75mm	3.5" x 7" x 3"
Weight	1.00kg	2.20lb

5 PACK

The Self-Opening Pulley Module (5 Pack) provides the core HAL function of manipulation, as described above, this module offering five Self-Opening Pulleys, two Splitter Balls and a larger Pouch.



- 5x Self-Opening Pulley
- 2x Splitter Ball
- Internal Pouch 22

Dimensions (L x W x H)	180mm x 180mm x 75mm	7" x 7" x 3"
Weight	2.20kg	4.85lb

MANIPULATE DOUBLE PULLEY MODULE



P/N 4985786

The mechanical advantage Double Pulley Module provides the core HAL function of manipulation.

The Double Pulley combines a swivel and double pulley into one tool and incorporates a unique side plates which can be open one-handed. With the integrated swivel the double pulley has a reduced height which is important when maximising raising a given object. The Double Pulley also incorporates an eyelet at its base which can be used for attaching a carabiner or securing a main line.

It enables the Operator to use mechanical advantage when lifting/moving items, it can also be deployed as a single pulley. It also allows installing/removing the rope while the pulley is still anchored, which is often easier when rigging mechanical advantage systems.

The pouch is made from rugged, abrasion-resistant fabric and features a mesh pocket on the interior lid, and elastic loops on the interior base. The pouch has a double slider zipper closure. The rear of the pouch features Velcro Hook and two MOLLE straps with snaps to provide a variety of attachment options.

- 2x Double Pulleys
- Internal Pouch 12



Dimensions (L x W x H)	90mm x 180mm x 75mm	3.5" x 7" x 3"
Weight	1.40kg	3.09lb



ATTACH HOOK MODULE



P/N 4985787

The Hook Module provides the core HAL function of attachment and anchoring. It enables the Operator to attach directly to an item or use as an anchor point for pulleys, etc.

The two Single Hooks are a one-piece design stainless-steel and provided in two sizes: 25mm and 50mm opening. The Double Hook is also a single piece design with both hooks providing a 25mm opening.

The stainless-steel Self-Locking Hook features a flexible hasp that is fixed to the hook base and extends to the inside tip of the hook. This flexible hasp bends inwards to allow the hook to be pushed around a protrusion (such as handle on a suitcase, purse, or backpack), then flexes back into position to engage and close off the hook tip, securely “capturing” the target package. The Self-Locking Hook features a 50 mm (2.0”) opening.

Note: Hooks can be used with the Hook Setter/Holder Combination and a Telescopic Pole.

The pouch is made from rugged, abrasion-resistant fabric and features a mesh pocket on the interior lid, and elastic loops on the interior base. The pouch has a double slider zipper closure. The rear of the pouch features Velcro Hook and two MOLLE straps with snaps to provide a variety of attachment options.

- 1x Single Hook 25mm
- 1x Single Hook 50mm
- 1x Double Hook 25mm
- 1x Self-Locking Hook 50mm
- Internal Pouch 12

Dimensions (L x W x H)	90mm x 180mm x 75mm	3.5" x 7" x 3"
Weight	0.55kg	1.21lb

ATTACH CARABINER MODULES



P/N 4985788 2 Pack
P/N 4985789 5 Pack

2 PACK

The Carabiner Module (2 pack) provides the core HAL function of attachment and anchoring. The single size side-gate aluminium carabiner provides a strong link and in addition, the smooth round cross section allows a line to pass freely and with minimal friction. This enables a carabiner to be used in place of a pulley, if required. These carabiners are also ideal for firing cable line management.

The pouch is made from rugged, abrasion-resistant fabric. The pouch has a double slider zipper closure. The rear of the pouch features Velcro Hook and two MOLLE straps with snaps to provide a variety of attachment options.

- 2x Straight-Gate Carabiner
- Internal Pouch 10

Dimensions (L x W x H)	100mm x 50mm x 50mm	4" x 2" x 2"
Weight	0.15kg	0.33lb



5 PACK

The Carabiner Module (5 pack) provides the core HAL function of attachment and anchoring, as described above, this module offering five Straight-Gate Carabiners and a larger pouch.

The pouch is made from rugged, abrasion-resistant fabric and features a mesh pocket on the interior lid, and elastic loops on the interior base. The pouch has a double slider zipper closure. The rear of the pouch features Velcro Hook and two MOLLE straps with snaps to provide a variety of attachment options.

- 5x Straight-Gate Carabiner
- Internal Pouch 11

Dimensions (L x W x H)	125mm x 100mm x 75mm	5" x 4" x 3"
Weight	0.45kg	0.99lb

ATTACH LOCKING CARABINER MODULES



P/N 4985790 2 Pack
P/N 4985791 5 Pack

2 PACK

The Locking Carabiner Module (2 pack) provides the core HAL function of attachment and anchoring. These carabiners feature a screw gate closure to prevent accidental gate opening. They can also be used to manage firing cable runs.

The pouch is made from rugged, abrasion-resistant fabric. The pouch has a double slider zipper closure. The rear of the pouch features Velcro Hook and two MOLLE straps.

- 2x Locking Carabiners
- Internal Pouch 10

Dimensions (L x W x H)	100mm x 50mm x 50mm	4" x 2" x 2"
Weight	0.15kg	0.33lb



5 PACK

The Locking Carabiner Module (5 pack) provides the core HAL function of attachment and anchoring as described above, this module offering five (5) Locking Carabiners in a larger Pouch.

This pouch is made from rugged, abrasion-resistant fabric and features a mesh pocket on the interior lid, and elastic loops on the interior base. The pouch has a double slider zipper closure. The rear of the pouch features Velcro Hook and two MOLLE straps with snaps to provide a variety of attachment options.

- 5x Locking Carabiners
- Internal Pouch 11

Dimensions (L x W x H)	125mm x 100mm x 75mm	5" x 4" x 3"
Weight	0.45kg	0.99lb

ATTACH ROLLER CARABINER MODULE



P/N 4985792

The Roller Carabiner Module provides the core HAL function of attachment, anchoring, and manipulation. These carabiners feature a screw gate closure to prevent accidental opening. They also incorporate an integrated roller mechanism which allows a line to pass through the device with minimal friction during pulling operations. This enables the roller carabiner to be used instead of a pulley if required.

This pouch is made from rugged, abrasion-resistant fabric. The pouch has a double slider zipper closure. The rear of the pouch features Velcro Hook and two MOLLE straps with snaps to provide a variety of attachment options.

- 2x Roller Carabiners
- Internal Pouch 10

Dimensions (L x W x H)	100mm x 50mm x 50mm	4" x 2" x 2"
Weight	0.15kg	0.33lb



ATTACH BASIC CLAMP MODULE



P/N 4985795

The Basic Clamp Module provides the core HAL function of attachment and anchoring when used in conjunction with other HAL equipment.

The Mini Vice Grip has been modified to include an eye which enables the main line to be attached directly to the grips. The grips can be attached to objects to provide an anchor point or positively attached directly to an item for semi-remote retrieval.

These lightweight forceps, in stainless steel with serrated jaws and locking mechanism, provide a positive attachment on thin fabric, sheet metal, electric wires including detonator wires.

The pouch is made from rugged, abrasion-resistant fabric and features a mesh pockets on the interior lid, and elastic loops on the interior base. The pouch has a double slider zipper closure. The rear of the pouch features Velcro Hook and two MOLLE straps with snaps to provide a variety of attachment options.

- 1x Forceps
- 1x Mini Vice Grip (w/eye)
- Internal Pouch 12

Dimensions (L x W x H)	90mm x 180mm x 75mm	3.5" x 7" x 3"
Weight	0.50kg	1.10lb

ATTACH CLAMP MODULE



P/N 4985796

The Clamp Module provides the core HAL functions of attachment and anchoring when used in conjunction with other HAL equipment.

The spring-loaded grip is made from a composite material with a steel spring. It is fitted with a wire cable and eye for line attachment. Colours may vary from those shown here, due to product evolution and availability. The grip is useful for positive attachment of a main line to textile or flexible sheet material. This can be achieved with minimal disturbance of the object to be moved due to the lightweight construction of the grip.

The vice grip has been modified to include an eye which enables the main line to be attached directly to the grips. The grips can be attached to objects to provide an anchor point, or positively attached directly to an item for semi-remote retrieval.

The sharp-toothed crocodile jaw grip is manufactured from steel. A unique cantilever design transmits tension in the line to the jaws to increase the gripping force. The toothed jaws can be rotated 90° to maximize the effective gripping area. A stainless-steel wire belay is fitted to the rear for line attachment. The grip is used for seizing the edges of heavy sheet materials (e.g. carpets, tarpaulins, coats) and other soft objects (e.g. sacks). The positive hold makes the grip highly effective for dragging objects.

The pouch is made from rugged, abrasion-resistant fabric, and features mesh pockets on the interior lid, and elastic loops on interior base. The pouch has a double slider zipper closure. The rear of the pouch features Velcro Hook and two MOLLE straps with snaps to provide a variety of attachment options.

- 1x Lightweight Spring Grip
- 1x Alligator Grip
- 1x Vice Grip (w/eye)
- Internal Pouch 14

Dimensions (L x W x H)	90mm x 360mm x 75mm	3.5" x 14" x 3"
Weight	1.60kg	3.53lb



ATTACH LOCKING CLAMP MODULE



P/N 4985797

The Locking Clamp Module provides the core HAL functions of attachment and anchoring when used in conjunction with other HAL equipment.

The Spring Clamps C5 are multiple purpose clamps that can be locked in position using the long screw. It can be used on car door handles and cabinet drawer handles to facilitate access. It can also be used as a direct attachment to an item or used to act as an anchor point for other HAL items.

The Long Clamp Screws are used to ensure the security of grip of Clamp C5. The screws are threaded through the holes on one handle of the clamp and impinge on the inner side of the other handle forcing the jaws closed.

This pouch is made from rugged, abrasion-resistant fabric and features a mesh pocket on the interior lid, and elastic loops on the interior base. The pouch has a double slider zipper closure. The rear of the pouch features Velcro Hook and two MOLLE straps with snaps to provide a variety of attachment options.

- 2x Spring Clamp C5
- 2x Clamp Screw Long
- Internal Pouch 12

Dimensions (L x W x H)	90mm x 180mm x 75mm	3.5" x 7" x 3"
Weight	0.40kg	0.88lb

ATTACH ENDLESS LOOP MODULE



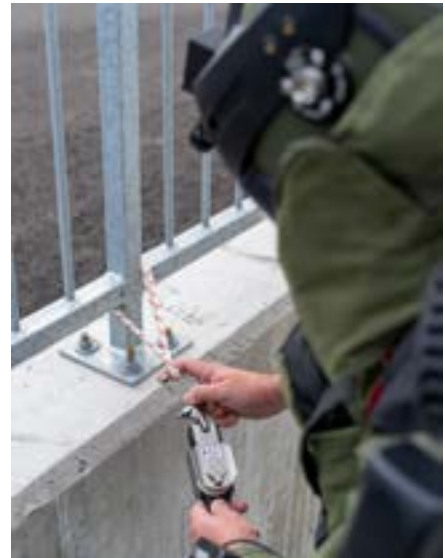
P/N 4985808

The Endless Loop Module provide two HAL core functions of attachment and anchoring. The polyester braid covered Rope Loop is a low-stretch line and has an Aramid core. It provides quick anchor points around bars or poles. Rope Loops can also be used as primary attachment mechanisms.

- 2x Rope Loop 0.5m
- 2x Rope Loop 1.0m
- Internal Pouch 11

This pouch is made from rugged, abrasion-resistant fabric and features a mesh pocket on the interior lid, and elastic loops on the interior base. The pouch has a double slider zipper closure. The rear of the pouch features Velcro Hook and two MOLLE straps with snaps to provide a variety of attachment options.

Dimensions (L x W x H)	125mm x 100mm x 75mm	5" x 4" x 3"
Weight	0.30kg	0.66lb



ATTACH HIGH-VISIBILITY ENDLESS LOOP MODULE



P/N 4985809

The High-Visibility Endless Loop Module provides two HAL core functions of attachment and anchoring. The green and orange loops offer high visibility options in addition, these loops offer suitable below water visual properties where the orange line is suitable for shallow waters and the green for deeper.

- 2x Green Endless Loop 0.5m
- 2x Orange Endless Loop 1.0m
- Internal Pouch 11

The Rope Loops are low-stretch lines which have an Aramid core and a polyester protective overbraid. It provides highly visible quick anchor points around bars or poles. Rope Loops can also be used as primary attachment mechanisms.

This pouch is made from rugged, abrasion-resistant fabric and features a mesh pocket on the interior lid, and elastic loops on the interior base. The pouch has a double slider zipper closure. The rear of the pouch features Velcro Hook and two MOLLE straps with snaps to provide a variety of attachment options.

Dimensions (L x W x H)	125mm x 100mm x 75mm	5" x 4" x 3"
Weight	0.40kg	0.88lb

ATTACH SLING MODULE



P/N 4985810

The Sling Modules provide two core HAL functions of attachment and anchoring. The Rope slings are made of pre-stretched polyester rope. They have 35mm soft eyes at both ends. Each end is secured with crimped aluminium splices. The Wire slings are made of galvanized steel stranded wire. They have a 30mm soft eye at both ends. Each end is secured with crimped aluminium splices. All slings can be used to form self-tightening loops for anchoring pulleys (e.g. to trees or posts) or for improvising a variety of other attachment and anchoring rigs.

- 2x Rope Sling, 2.0m
- 1x Wire Sling, 1.0m
- 1x Wire Sling, 2.0m
- 1x Anchor Line, 4.0m
- 1x Line Branch
- 1x D-Shackle
- Internal Pouch 14

The 4.0m Anchor Line is a low-stretch line with an Aramid core and a polyester protective overbraid. The line is terminated with a stainless-steel snap-shackle.

The Line Branch is a clamp with an eye for securing onto 5.5mm diameter line. The clamping function is operated by a thumb-wheel screw. The eye can be clamped securely onto the main line at any point to provide a fixing point for a second line thereby permitting sideways pulling, attachment of a pulley or anchoring of the line.

The small screw-pin stainless-steel D-shaped shackle is ideal for use in confined spaces to connect two rope, two wire slings, or two single pulleys together.

The pouch is made from rugged, abrasion-resistant fabric, and features mesh pockets on the interior lid, and elastic loops on interior base. The pouch has a double slider zipper closure. The rear of the pouch features Velcro Hook and two MOLLE straps with snaps to provide a variety of attachment options.

Dimensions (L x W x H)	90mm x 360mm x 75mm	3.5" x 14" x 3"
Weight	0.75kg	1.65lb

ATTACH BELT SLING MODULE



P/N 4985813

The Belt Sling Module provides the core HAL functions of attachment and anchoring. Belt and Webbing slings are suitable for moving objects that do not have an obvious point for main line attachment. The increased surface area provided by the width of the webbing or belt reduces the risk of slippage under a target object. These slings can also be passed around posts, trees or other large stable objects for use as an anchor point.

- 1x Belt Sling 1.5m
- 1x Webbing Sling 1.0m
- 1x Webbing Sling 2.0m
- Internal Pouch 22

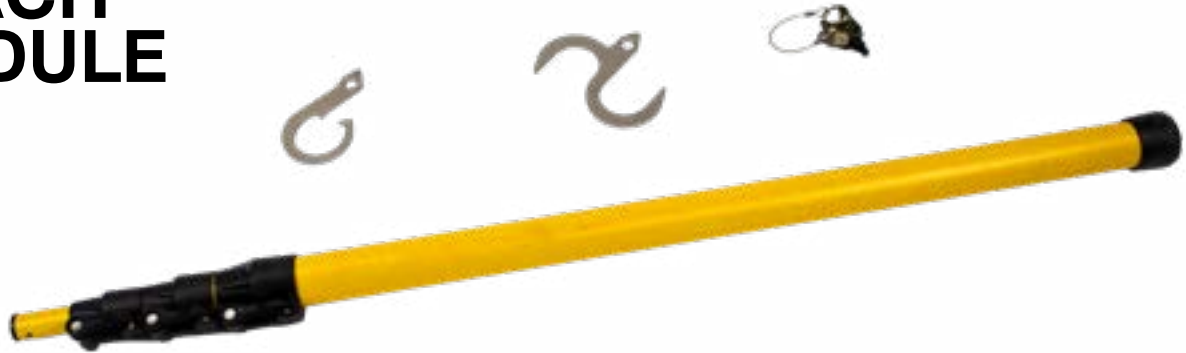
The Webbing Slings are made from heavy duty nylon, can be fastened around an object in two different ways. The single D-Ring can be simply threaded through the double D-Rings at the other end of the strap for a snare type hold which will release once tension on the strap is released. The single D-Ring can be threaded through both D-Rings and then looped back through one for a belt type hold that will remain secure even after tension on the strap is released.

Belt Sling - A PVC-coated woven polyester belt with a stainless-steel buckle. It forms a self-adjusting loop from 50 to 400 mm diameter. The free end threads freely through the buckle and has a length of strap ending in a stitched loop for the main line attachment.

The pouch is made from rugged, abrasion-resistant fabric, and features mesh pockets on the interior lid, and elastic loops on interior base. The pouch has a double slider zipper closure. The rear of the pouch features Velcro Hook and two MOLLE straps with snaps to provide a variety of attachment options.

Dimensions (L x W x H)	180mm x 180mm x 75mm	7" x 7" x 3"
Weight	0.80kg	1.76lb

REACH REACH MODULE



P/N 4985793

The Reach Module provides the core HAL functions of reach combined with attachment and anchoring. This rugged fibreglass telescopic pole provides a 1.07 to 3.43m (42 to 135in) reach. The Pole interfaces with the supplied Hook Setter/Holder. The Pole interfaces with the supplied Hook Setter/Holder and is also compatible with the components in the Hook Module.

The Hook Setter/Holder allows the remote deployment and secure attachment of supplied S-Type and 19mm Gap Hooks to a high point for anchoring, alternatively onto a suspect package.

The pouch is made from rugged, abrasion-resistant fabric, and features mesh pockets on the interior lid, and elastic loops on interior base. The pouch has a double slider zipper closure. The rear of the pouch features Velcro Hook and two MOLLE straps with snaps to provide a variety of attachment options.

This tool roll is made from rugged, abrasion-resistant fabric, and features two (2) side release buckles to hold the roll closed. Inside, deep pockets of varying sizes are used to hold the components in place.

Tool Roll Dropdown Extension is made from rugged, abrasion-resistant fabric, and features webbing straps that attach to the Tool Roll Long so that it hangs below to form a seat for tool heads that are too large to fit inside the roll.

- 1x Telescopic Pole 3m
- 1x Hook 50mm, 19mm Gap
- 1x S-Hook
- 1x Hook Holder Setter
- Internal Pouch 11
- Tool Roll, Long
- Tool Roll Dropdown Extension



Dimensions (L x W x H)	1000mm x 125mm x 75mm	40" x 5" x 3"
Weight	6.05kg	13.33lb

REACH LIGHTWEIGHT REACH MODULE



P/N 4985794

The Lightweight Reach Module provides the core HAL functions of reach combined with attachment and anchoring. The Collapsible Pole snaps together like a tent pole and extends to a length of 3.3m (130in) to provide reach during attachment and placement activities. The Pole interfaces with the Hook Setter/Holder.

The Pole is constructed of aluminium with an elasticated cord which is tensioned and tied off at the handle.

The Hook Setter/Holder allows the semi-remote deployment and secure attachment of a hook to a high point for anchoring, alternatively onto a suspect package. The attachment point is compatible with the components in the Hook Module.

The Hook Setter/Holder allows the remote deployment and secure attachment of a hook to a high point for anchoring, alternatively onto a suspect package.

This pouch is made from rugged, abrasion-resistant fabric, and features a mesh pocket on the interior rear. The pouch has a double slider zipper closure. The rear of the pouch features MOLLE straps with snaps for attachment to a carrier.

- 1x Lightweight Collapsible Pole
- 1x Hook Setter/Holder
- External Pouch 61

Dimensions (L x W x H):	550mm x 66mm x 75mm	21.7" x 2.6" x 3"
Weight:	1.01kg	2.23lb

ANCHOR SUCTION CUP MODULE



P/N 4985800

The Suction Cup Module provides the core HAL function of anchoring to any smooth, hard surface. The eye provides a point of attachment for lines and pulleys. The small, medium, and large suction cup bridges have been designed to join 2 single suction cups together to make a double suction cup. The bridges contain a spring-loaded mechanism to ease fitment. The eye provides a point of attachment for lines and pulleys.

- 2x Suction Cup
- 1x Small Bridge
- 1x Medium Bridge
- 1x Large Bridge
- Internal Pouch 24

Three Bridges (small, medium, and large) are supplied and have been designed to join 2 single suction cups together to make a double suction cup. The bridges contain a spring-loaded mechanism to ease fitment. The eye provides a point of attachment for lines and pulleys.

The pouch is made from rugged, abrasion-resistant fabric, and features mesh pockets on the interior lid, and elastic loops on interior base. The pouch has a double slider zipper closure. The rear of the pouch features Velcro Hook and two MOLLE straps with snaps to provide a variety of attachment options.

Dimensions (L x W x H)	180mm x 360mm x 75mm	7" x 14" x 3"
Weight	1.70kg	3.75lb



ANCHOR ADHESIVE ANCHOR MODULE



P/N 4985801

The Adhesive Anchor Module provides the core HAL function of Anchoring. The self-adhesive anchor pads are designed as a onetime use item. The pad is a small square aluminium pad with a hard eye and adhesive backing. Eight holes are provided in the base for use of a screw or other, more permanent, fastener where required.

The pad can be rigged quickly as an anchor point. It is most effective when fixed to flat, clean, dry, non-porous surfaces. The aluminium pad can also be folded allowing it to be attached to corner of a package or wall.

The pouch is made from rugged, abrasion-resistant fabric, and features a mesh pocket on the interior lid, and an elastic loop on the interior base. The pouch has a double slider zipper closure. The rear of the pouch features Velcro Hook and two MOLLE straps with snaps to provide a variety of attachment options.

- 10x Self-Adhesive Anchor Pads
- Internal Pouch 11

Dimensions (L x W x H)	125mm x 100mm x 75mm	5" x 4" x 3"
Weight	0.40kg	0.88lb



ANCHOR GROUND ANCHOR MODULE



P/N 4985802

The Ground Anchor Module provides the core HAL function of anchoring. Coated in a plastic paint, the spiral ground anchors are manufactured from hardened steel and have a 55mm diameter eye for line or pulley attachment. They are effective for providing anchor points in soft ground.

- 2x Ground Anchor
- Internal Pouch 14

This pouch is made from rugged, abrasion-resistant fabric and features a mesh pocket on the interior lid, and elastic loops on the interior base. The pouch has a double slider zipper closure. The rear of the pouch features Velcro Hook and two MOLLE straps with snaps to provide a variety of attachment options.

Dimensions (L x W x H)	90mm x 360mm x 75mm"	3.5" x 14" x 3"
Weight	1.20kg	2.64lb

ANCHOR PITON MODULE



P/N 4985803

The Piton Anchor Module provides the core HAL function of anchoring. The Pitons are manufactured from hardened steel and have a 17mm diameter eye for line or pulley attachment. Pitons can be driven into joints or cracks in pavement, masonry, and other materials. They are effective for providing anchor points in open areas such as parking lots.

- 6x Piton Anchor
- Internal Pouch 11

This pouch is made from rugged, abrasion-resistant fabric and features a mesh pocket on the interior lid, and elastic loops on the interior base. The pouch has a double slider zipper closure. The rear of the pouch features Velcro Hook and two MOLLE straps with snaps to provide a variety of attachment options.

Dimensions (L x W x H)	125mm x 100mm x 75mm	5" x 4" x 3"
Weight	0.80kg	1.76lb

ANCHOR CREVASSE ANCHOR MODULE



P/N 4985804

The Crevasse Anchor Module provides the core HAL function of anchoring. The Wallnuts are manufactured from forged alloy with stranded steel wire loops. Wallnuts are standard items of mountaineering equipment and can be used to provide anchor points in opportune cracks or openings (e.g. between door jamb and door).

The pouch is made from rugged, abrasion-resistant fabric, and features mesh pockets on the interior lid, and elastic loops on interior base. The pouch has a double slider zipper closure. The rear of the pouch features Velcro Hook and two MOLLE straps with snaps to provide a variety of attachment options.

- 2x Walnut 2mm
- 2x Walnut 5mm
- 2x Walnut 8mm
- 2x Walnut 11mm
- Internal Pouch 14

Dimensions (L x W x H)	90mm x 360mm x 75mm	3.5" x 14" x 3"
Weight	0.60kg	1.32lb

ANCHOR WOOD ANCHOR MODULE



P/N 4985805

The Wood Anchor Modules provides the core HAL function of anchoring. The steel screw eye has a sharp point and an aggressive thread form. The head is in an eye form for gripping during hand insertion and for use as an anchor point. The screw eye provides an anchor point in wood or similar materials. It can be screwed into door frames, windows sills and furniture.

- 10x Screw Eye
- Internal Pouch 10

The pouch is made from rugged, abrasion-resistant fabric. The pouch has a double slider zipper closure. The rear of the pouch features Velcro Hook and two MOLLE straps with snaps to provide a variety of attachment options.

Dimensions (L x W x H)	100mm x 50mm x 50mm	4" x 2" x 2"
Weight	0.05kg	0.11lb

ANCHOR DOOR ANCHOR MODULE



P/N 4985807

The Door Anchor Module provides the core HAL function of anchoring and provides numerous options to manage the main line through doorways and attachment of pulleys or carabiners on the likes of doors and door frames.

The Extension Bar Anchor is designed to provide a secure anchor point across open areas, such as doorways. The Extension Bar Anchor (alone) spans areas 710 mm (28 in) to 1270 mm (50 in). Attach the extension pole to span distances from 1270 mm (50 in) to 1830 mm (72 in).

The rubber end covers can be removed to reveal spiked ends for optimum security, depending on the target surface. The Extension Bar Anchor can also be used as a support or holdback to jam open doors, elevators, etc.

The sliding bar clamp anchor has 2 adjustable jaws fitted to a steel bar. The bar has 5 holes for anchor points. The jaws have adjustable locking screw handles and are supplied with 2 pairs of snap-on feet fittings: 'V' groove and spiked. Each jaw can be reversed to allow clamping outwards. The clamp provides convenient anchor points at doors, window frames and other structures (e.g. pipes).

Both jaws can be positioned at any point along the bar to accommodate different edge thicknesses. Tightening the locking screw handles will clamp the jaws securely to the edge of the frame.

The Bar Clamp Anchor also features a reflective logo (10mm x 10mm), reflecting light from a flashlight.

The Door Stop is a soft rubber wedge used typically to jamb a door in the open position where it is inserted beneath the door and the floor thereby maintaining access.

The Door Hinge Anchor is placed over door hinges of varying sizes and locked into place using screw adjusters in order to provide a secure anchor point. The Door Hinge also features a reflective logo (10mm x 10mm), reflecting light from a flashlight.

The Internal Pouch 11 is made from rugged, abrasion-resistant fabric and features a mesh pocket on the interior lid, and elastic loops on the interior base. The pouch has a double slider zipper closure. The rear of the pouch features Velcro Hook and two MOLLE straps with snaps to provide a variety of attachment options.

The tool roll is made from rugged, abrasion-resistant fabric, and features an adjustable shoulder strap, and three (3) side release buckles to hold the roll closed. Inside, deep pockets with elastic webbing provide easy access to tools, and Velcro loops help to hold them in place. There is a strip of Velcro loop for attachment of a pouch. Velcro strips along the sides allow attachment of multiple tool rolls in tandem to form a larger roll.

- 1x Extension Bar Anchor
- 1x Bar Clamp Anchor
- 2x Doorstop (Rubber Wedge)
- 1x Door Hinge Anchor
- Internal Pouch 11
- Tool Roll, Long

Dimensions (L x W x H)	900mm x 125mm x 75mm	35" x 5" x 3"
Weight	7.60kg	16.75lb

ANCHOR WEDGE MODULE



P/N 4985806

The Wedge Module provides the core HAL function of access. Once a building door has been opened, the use of a wedge maintains access for follow-on remote or semi-remote actions.

- 2x 3-Function Door Wedge
- 2x Door Stop
- Internal Pouch 11

The T-shaped 3-Function Door Wedge can be used beneath the bottom of the door in a similar fashion to the standard Door Stop. It can also be used over the door hinge where its shape prevents the door from closing thereby maintaining access. It is fitted with any eyelet for attachment of a pulley or carabiner which assists in the management of a main line or perhaps firing cable.

The Door Stop is a soft rubber wedge used typically to jamb a door in the open position where it is inserted beneath the door and the floor thereby maintaining access.

The pouch is made from rugged, abrasion-resistant fabric. The pouch has a double slider zipper closure. The rear of the pouch features Velcro Hook and two MOLLE straps with snaps to provide a variety of attachment options.

This pouch is made from rugged, abrasion-resistant fabric and features a mesh pocket on the interior lid, and elastic loops on the interior base. The pouch has a double slider zipper closure. The rear of the pouch features Velcro Hook and two MOLLE straps with snaps to provide a variety of attachment options.

Dimensions (L x W x H)	125mm x 100mm x 75mm	5" x 4" x 3"
Weight	0.60kg	1.32lb



ACCESS ELASTIC CORD MODULE



P/N 4985811

The Elastic Cord Module provides the core HAL function of access when used in conjunction with other HAL components. Each Shock Cord is fitted with steel hooks at each end. Typically used to apply tension or to keep vehicle and building doors open so they cannot close after being opened using a line pull.

- 2x Shock Cord, 0.5m
- 2x Shock Cord, 1.0m
- Internal Pouch 12

The pouch is made from rugged, abrasion-resistant fabric and features a mesh pocket on the interior lid, and elastic loops on the interior base. The pouch has a double slider zipper closure. The rear of the pouch features Velcro Hook and two MOLLE straps with snaps to provide a variety of attachment options.

Dimensions (L x W x H)	90mm x 180mm x 75mm	3.5" x 7" x 3"
Weight	0.60kg	1.32lb



ACCESS DOOR OPENER MODULE



P/N 4985814

The Door Opener in conjunction with the Door Anchor Module may be used on any household door providing the core HAL function of access.

This Module must be paired with the Door Anchor Module to function.

- 1x Door Opener
- 1x Multi-Purpose Clamp
- External Pouch 52

The Door Opener is secured onto the Door Anchor and provides the capability to push open doors remotely.

The Door Opener has a pivot arm fitted with a hydraulic cylinder which when released by pulling on a single operating line, exerts pressure on the door to push it open. The hydraulic arm prevents the door from closing again.

The Multi-Purpose Clamp is a unique triple-prong design with gripping function makes it a versatile and easy to attach to a variety of handles (spherical, cylindrical or lever type) and other fixtures. Within the Door Opener Module, it is used primarily to attach to door handles in conjunction with the Door Opener.

This pouch is made from rugged, abrasion-resistant fabric, and features mesh pockets on the interior lid, and elastic loops on interior rear, which is lined with Hook and Loop for attachment of smaller pouches. The pouch has a double slider zipper closure. The rear of the pouch features MOLLE straps with snaps for attachment to a carrier. A removable adjustable shoulder strap allows the pouch to be used as a separate carrier. The rear side seams have an open-end zipper to facilitate attachment to additional 50 series pouches to form a larger pack.

Dimensions (L x W x H)	450mm x 120mm x 75mm	17.7" x 4.7" x 3"
Weight	2.20kg	4.85lb



ACCESS KEY TURNER MODULE



P/N 4985815

The Key Turner may be used on any locked vehicle or building door providing the core HAL function of access. The Key Turner is a rotatable clamp specially designed to firmly hold keys in locks and enable them to be smoothly turned through 180°.

This module requires the Suction Cup module to operate.

The pouch is made from rugged, abrasion-resistant fabric and features a mesh pocket on the interior lid, and elastic loops on the interior base. The pouch has a double slider zipper closure. The rear of the pouch features Velcro Hook and two MOLLE straps with snaps to provide a variety of attachment options.

- 1x Key Turner
- Internal Pouch 11

Dimensions (L x W x H)	125mm x 100mm x 75mm	5" x 4" x 3"
Weight	0.60kg	1.32lb



ACCESS

VEHICLE DOOR OPENER MODULE



P/N 4985816

The Vehicle Door Opener Module provides the core HAL functions of access for the operator to various style of vehicle door handles.

The Spring Clamp C5 is a multiple purpose clamp that can be secured in position (using the long Clamp Screw) and can be used on car door handles amongst others to facilitate access. It can also be used as a direct attachment to an item or used to act as an ancho point for other HAL items.

The Clamp Screws (long & short) are used to ensure the security of grip of the Spring Clamp C5. The screws are threaded through the top threaded holes on the handle of the clamp and impinge on the inner side of the other handle.

The Push Button Actuator is designed to allow vehicle doors with push button type releases to be operated and opened in a single pull. The Actuator is mounted on the vehicle door utilizing the supplied Clamp C5 which is clamped and secured onto the door handle. Alternatively, the Actuator can be used with the optional Suction Cup and Bridge.

The Grip Lifter provides secure attachment to virtually any 'paddle' type vehicle door handle regardless of orientation. The Grip Lifter is fixed securely to the handle by tightening the screw lock ring.

The pouch is made from rugged, abrasion-resistant fabric and features a mesh pocket on the interior lid, and elastic loops on the interior base. The pouch has a double slider zipper closure. The rear of the pouch features Velcro Hook and two MOLLE straps with snaps to provide a variety of attachment options.

- 1x Spring Clamp C5
- 1x Clamp Screw Long
- 1x Clamp Screw Short
- 1x Push Button Actuator
- 1x Grip Lifter
- Internal Pouch 12



Dimensions (L x W x H)	90mm x 180mm x 75mm	3.5" x 7" x 3"
Weight	0.70kg	1.54lb

ACCESS WINDOW BREAKER MODULE



P/N 4985817

The Window Breaker Module provides the core HAL function of access by enabling the Operator to break tempered glass and gain access into a vehicle or building (may require a subsequent application).

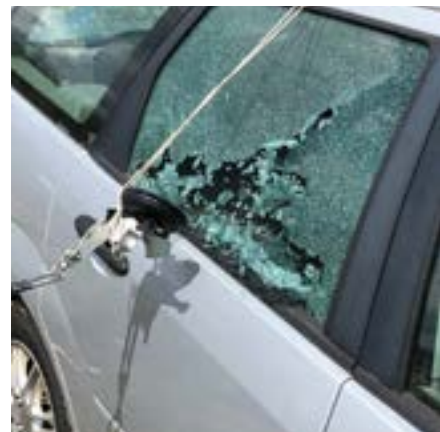
The Window Breaker is a spring operated device which can be attached to the Self-Adhesive Anchor Pad, when attached to a standard tempered window and operated via the main line, will shatter the glass using the self-cocking spring released steel tip.

The polyester braid covered Rope Loop is a low-stretch line and has an Aramid core. It provides a lazy line to the Window Breaker which is secured to the vehicle or building preventing it from dropping to the ground.

The self-adhesive anchor pads are designed as a onetime use item. The pad is a small square aluminium pad with a hard eye and adhesive backing. The pad can be rigged quickly as an anchor point for both the Window Breaker and Rope Loop. It is most effective when fixed to flat, clean, dry, non-porous surfaces. The Window Breaker Module is compatible for use with the Suction Cup Module.

The pouch is made from rugged, abrasion-resistant fabric and features a mesh pocket on the interior lid, and elastic loops on the interior base. The pouch has a double slider zipper closure. The rear of the pouch features Velcro Hook and two MOLLE straps with snaps to provide a variety of attachment options.

- 1x Window Breaker
- 1x Rope Loop 1.0m
- 10x Self-Adhesive Anchor
- Internal Pouch 22



Dimensions (L x W x H)	180mm x 180mm x 75mm	7" x 7" x 3"
Weight	0.75kg	1.65lb

LIFT HAL 1LINE TRIPOD



P/N 1003898

The HAL 1 Line Tripod (also called the TP1L or One Line Tripod) provides the EOD technician with greater control when lifting and extracting.

This innovative device requires only a single line to first lift the target object, then trigger a hinged drop arm that positions the target object outside the tripod’s footprint. The 1 Line Tripod is light enough to be hand carried and easily set up by a technician wearing an EOD suit. The Tripod can be deployed for use in IEDD scenarios, as well as rural and battlefield UXO extractions. Easily lifts up to 227 kg (500 lb) with drop arm attached and extends and retracts for variable operating height as required.

- 1x Tripod (with removable drop arm)
- 1x Action Line
- 1x Splitter Ball
- 1x Soft Ground Spike
- 3x Piton
- 3x Bracing Straps
- 1x Carry Bag
- 1x Carry Sling
- 1x Spares Kit

Working Height	Safe Working Load
Minimum Operational Height 2.13m m (7 ft)	227 kg (500 lb)
Maximum Operational Height 3.15 m (10.4 ft)	159 kg (350 lb)

Stored Length 2.29m

Component	Weight (kg)	Weight (lb)
Tripod with Drop Arm	20.0	44.0
Carry Sling and Contents	5.6	12.4
Total	25.6	56.4

LIFT HAL LIGHTWEIGHT TRIPOD



P/N 1003899

The HAL Lightweight Tripod was developed specifically for the IEDD role and is designed to assist the remote lifting of smaller objects. The tripod is highly portable and can be placed in position with ease by a bomb technician wearing a fully encapsulated bomb suit such as the EOD 10E. The tripod is inter-operable with all Med-Eng HAL equipment, its maximum load is 90kg (200 lb) under all service conditions.

The Tripod is easily rigged and placed by a single bomb technician and can be used in any intermediate leg position. Self-levelling feet and anchor attachments increase the versatility and range of applications. The legs are manufactured from carbon-fibre to provide strength and to keep weight to a minimum. Pulleys are provided to allow the Line to be rigged to mechanical advantage. The Auxiliary Pulley ensures that pulling force is applied at ground level for maximum stability.

- 1x Tripod Assembly
- 1x Double Pulley
- 1x Self-Opening Pulley
- 1x Auxiliary Pulley
- 6x Locking Pins
- 3x Bracing Line
- 3x Bracing Line Adjuster
- 6x Anchor Peg Straight
- 3x Anchor Peg Serrated
- 1x User Guide
- 1x Bag

Dimensions (L x W x H)	1015mm x 260mm x 205mm	41.3" x 10.2" x 8.1"
Weight (total):	13.9kg	110lb
Weight (tripod):	7.0kg	30lb

Maximum extended height: 2150mm



LIFT BIPOD MODULE



P/N 4985819

The Bipod Module enables the Operator to perform the core HAL function of access to the engine compartment of a vehicle.

The Bipod provides a sturdy A-frame to route a line at a suitable height, providing leverage causing objects such as a vehicle hood to be raised in a single pull. The bipod can be rigged quickly and easily and is used with an anchor holding it in position. The Bipod features a brace to steady and hold its legs in a firm position; an eyelet to secure an anchor line and a tapered ribbed cleat. The cleat securely holds the main line in the optimum position in readiness to be pulled.

The One-Way Locking Pulley is used to change the direction of pull of the main line and used to lock and hold the line keeping an object (such as a vehicle hood) raised or suspended or to keep the line under tension. The Pulley is fitted with a swivel retaining hook at its top for quick and easy attachment.

The six-piece Hook Set is specifically designed to allow easy and secure attachment of a pull or securing line around modern hood release catches.

The Self-Adhesive Anchor Pads are designed as a onetime use item. The pad is a small square aluminium pad with a hard eye and adhesive backing. The pad can be rigged quickly as an anchor point for a securing line holding the Bipod in position. It can also be used as an attachment point for the Locking Pulley. It is most effective when fixed to flat, clean, dry, non-porous surfaces.

The pouch is made from rugged, abrasion-resistant fabric and features a mesh pocket on the interior lid, and elastic loops on the interior base. The pouch has a double slider zipper closure. The rear of the pouch features Velcro Hook and two MOLLE straps with snaps to provide a variety of attachment options.

The tool roll is made from rugged, abrasion-resistant fabric and features an adjustable shoulder strap, and three side release buckles to hold the roll closed. Inside, deep pockets with elastic webbing provide easy access to tools and Velcro loops help hold them in place. There is a strip of Velcro loop for attachment of a pouch. Velcro strips along the sides allow attachment of multiple tool rolls in tandem to form a larger roll.

- 1x Bipod
- 1x One-Way Locking Pulley
- 1x Six-piece Hood Release Hook Set
- 10x Self-Adhesive Anchor Pads
- Internal Pouch 14
- Long Tool Roll



Weight	3.30kg	7.27lb
Internal Pouch		
Dimensions (L x W x H)	90mm x 360mm x 75mm	3.5" x 14" x 3"
Long Tool Roll		
Dimensions (L x W x H)	900mm x 130mm	35" x 5"

SPECIAL HANDBRAKE RELEASE MODULE



P/N 4985818

The Handbrake Release Module enables the Operator to semi-remotely release a push button type of handbrake, as part of a team's response capabilities.

The Handbrake Release is an aluminium bracket which is secured over the traditional push button handbrake and lever which when remotely pulled by the main line presses the push button.

The 0.5m elastic Shock Cord is fitted with steel hooks at each end. In this application, the Shock Cord assists with downward motion of the Handbrake Release when activated by the main line.

This pouch is made from rugged, abrasion-resistant fabric and features a mesh pocket on the interior lid, and elastic loops on the interior base. The pouch has a double slider zipper closure. The rear of the pouch features Velcro Hook and two MOLLE straps with snaps to provide a variety of attachment options.

- 1x Hand Brake Release
- 1x Shock Cord 0.5m
- Internal Pouch 12



Dimensions (L x W x H)	90mm x 180mm x 75mm	3.5" x 7" x 3"
Weight	0.60kg	1.32lb

SPECIAL GATED CUTTER MODULE



Black Gated Cutter



Green Gated Cutter

P/N 8005065 Black
P/N 8005066 Green

The Gated Cutter Module is supplied in two (2) colours; one black the other green. The Gated Cutter enables the Operator to cut clothing, webbing, ropes and other textiles semi-remotely when used in conjunction with other HAL equipment.

The green gated cutter offers high visibility options in addition, this cutter offers suitable below water visual properties where the green cutter is suitable for deep waters.

The Cutter is fitted with a pair of ceramic blades which provide a non-conductive cutting edge. The dual blade design enables two simultaneous cuts. The spring gates can be removed if it is not necessary to capture the target material.

The gated feature was specifically designed for use in Maritime missions to capture the material to be cut so that it would not fall off in moving water while the Operator moves back to the safe area. A weight or float can be attached to the blade end of the cutter to keep the target against the gate and away from the blades until the pulling action is commenced.

Four (4) spring gates and four (4) ceramic blades are provided as spares.

The pouch is made from rugged, abrasion-resistant fabric, and features a mesh pocket on the interior lid, and an elastic loop on the interior base. The pouch has a double slider zipper closure. The rear of the pouch features Velcro Hook and two MOLLE straps.

- 2x Gated Cutting Tool Black or Green
- 4x Spare Spring Gates
- 4x Spare Blades
- Internal Pouch 11

Dimensions (L x W x H)	125mm x 100mm x 75mm	5" x 4" x 3"
Weight	0.40kg	0.88lb

SPECIAL RIGGING TOOLS MODULE



P/N 4985820

The Rigging Tool module provides the Operator two tools primarily for use in maritime operations.

The Side Cutting Pliers feature a high leverage pivot design for easier cutting. The jaws are machined for a slip-resistant grip in wet conditions. This tool is made from steel with hardened cutting edges.

Rigging Knife - The rigging knife is made entirely of stainless steel with a 6cm (2 1/2") dura-edged blade. It comes with a 7.6cm (3") marlin spike, shackle key, and screwdriver.

The pouch is made from rugged, abrasion-resistant fabric and features a mesh pocket on the interior lid, and elastic loops on the interior base. The pouch has a double slider zipper closure. The rear of the pouch features Velcro Hook and two MOLLE straps with snaps to provide a variety of attachment options.

- 1x Side Cutting Pliers
- 1x Rigging Knife
- Internal Pouch 12

Dimensions (L x W x H)	90mm x 180mm x 75mm	3.5" x 7" x 3"
Weight	0.40kg	0.88lb

SPECIAL SURVEY LINE MODULE



P/N 4985821

The Survey Line Module enables the Operator to clearly delineate a search area or safe route.

The orange high-visibility line ensures it can be easily seen whether used above ground or in shallow waters.

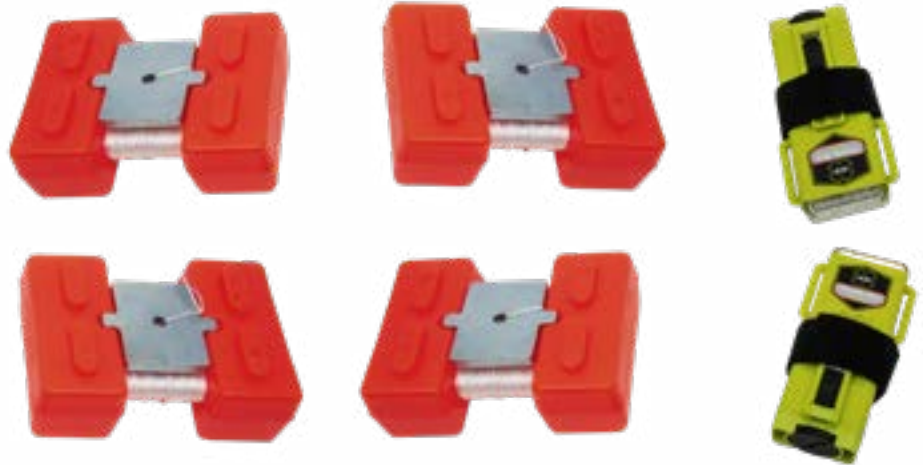
The Locking Finger Reel is a small and low-profile finger reel and is designed to mark areas for searching or identifying a cleared path. The stainless-steel clip permits the spool to be quickly secured to a nearby object while the 15m of nylon braided line is dispensed off the ABS plastic reel by hand, without additional tools. The standing end is attached to the centre of the plastic reel and does not drop away.

The pouch is made from rugged, abrasion-resistant fabric and features a mesh pocket on the interior lid, and elastic loops on the interior base. The pouch has a double slider zipper closure. The rear of the pouch features Velcro Hook and two MOLLE straps with snaps to provide a variety of attachment options.

- 2x Locking Finger Reel
- Internal Pouch 12

Dimensions (L x W x H)	90mm x 180mm x 75mm	3.5" x 7" x 3"
Weight	0.40kg	0.88lb

SPECIAL MARINE MARKING MODULE



P/N 4985824

The Marine Marking Module provides the operator the means to clearly mark areas of interest underwater in all weather conditions.

The floating marine marker is ideal for marking underwater hazards, or structures, and will unwind itself until the weight hits the bottom at a depth of up to 75' (23m). It has a snap-together design which makes it easy to use and has a high-visibility UV coating. The weight snaps securely into the floating part of the marker when not in use to prevent tangling. Multiple markers can be snapped together.

The Maritime Strobe Light is reusable and intended to mark hazards on the surface, the strobe light has a built-in water activation feature that will automatically activate once submerged. Straps provide the operator with the means to attach the light to the floating marine marker, a diver's belt or a personal floatation device. The maritime strobe has been factory tested to 10m and the LED lamp provides up to 56 hours of use. Using wide light emission LED's, it shines through fog, rain and snow to create a super-bright flash visible for over 3 miles.

This pouch is made from rugged, abrasion-resistant fabric and features a mesh pocket on the interior lid, and elastic loops on the interior base. The pouch has a double slider zipper closure. The rear of the pouch features Velcro Hook and two MOLLE straps with snaps to provide a variety of attachment options.

- 4x Floating Marine Marker
- 2x Maritime Strobe Light
- Internal Pouch 24

Dimensions (L x W x H)	180mm x 360mm x 75mm	7" x 14" x 3"
Weight	2.00kg	4.41lb

SPECIAL UNDERWATER COLLECTION MODULE



P/N 4985825

The Underwater Collection Module provides the Operator with a means to carry additional tools and to recover items in a safe and efficient manner when working on or beneath the water line.

The Line with Holder holds 91m of black paracord which is wrapped around a 43cm poly-carbonate flat hand-held spooler. The paracord line is provided as a consumable item which can be cut to user defined lengths required for successful mission completion.

The Small and Large Collection Bags are breathable polyester mesh bags featuring a drawstring top with a cord-lock. The bags can be used to transport tools underwater or act as an evidence collection bag.

The multi-function 12inch locking zip ties can be used to secure, attach and manage a variety of items.

This pouch is made from rugged, abrasion-resistant fabric, and features mesh pockets on the interior lid, and elastic loops on interior rear, which is lined with Hook and Loop for attachment of smaller pouches. The pouch has a double slider zipper closure. The rear of the pouch features MOLLE straps with snaps for attachment to a carrier. A removable adjustable shoulder strap allows the pouch to be used as a separate carrier. The rear side seams have an open-end zipper to facilitate attachment to additional 50 series pouches to form a larger pack.

- 1x 91m (300ft) Line w/Holder
- 2x Small Collection Bags
- 2x Large Collection Bags
- 1x 12" Zip Tie (20pk)
- External Pouch 53

Dimensions (L x W x H)	450mm x 200mm x 75mm	17.7" x 7.9" x 3"
Weight	4.05kg	8.93lb

SPECIAL LOCKOUT/ TAGOUT MODULE



P/N 8005064

The Lockout/Tagout Module enables the Operator to ensure dangerous machinery is properly shut off and not able to start up prior to the completion of their mission. The module provides a complete valve and electrical kit made of non-conducting thermoplastics. The module is designed to provide the appropriate level of safety prior to inspecting mechanical/electrical areas where moving machinery or live current is present.

This pouch is made from rugged, abrasion-resistant fabric, and features a pass-through sleeve on the interior lid. The interior base has ample room and features a drawstring closure. Side closure zippers can be opened to allow the pouch depth to expand from 64mm to 127mm in order to accommodate larger product if required. The rear of the pouch features four MOLLE straps with snaps to provide a variety of attachment options, and the pouch is secured with two side release buckles.

- 3x 410RED Zenex™ padlocks (keyed alike)
- 1x 7C5RED circuit breaker padlock
- 1x 420 lockout hasp
- 1x 427 labelled snap-on red lockout hasp
- 1x S806 adjustable cable lockout device
- 1x 480 gate valve cover for 1" to 3" handles
- 1x 481 gate valve cover for 2" to 5" handles
- 1x 482 gate valve cover for 4" to 6.5" handles
- 1x S3068 ball valve lockout
- 1x 468L handle-off ball valve lockout
- 3x 493B circuit breaker lockouts
- 2x 491B circuit breaker lockouts
- 1x 496B wall switch cover
- 1x 497A Do Not Operate laminated safety tags (12-pack)
- External Pouch 33

Dimensions (L x W x H)	279mm x 127mm x 254mm	11" x 5" x 10"
Weight	3.30kg	7.27lb



SEARCH

Search is the management and application of systematic procedures and appropriate detection equipment to either locate specified target items, or prove their absence. Target items may include terrorist resources, conventional, improvised and CBRN munitions, missing and hiding persons, drugs, stolen goods, contraband, information and evidence. As well as locating hidden, lost, abandoned or discarded items search provides a risk management tool, isolates threats and facilitates safe access to the target, whilst minimising damage and disruption to routine activity, thereby enabling subsequent actions.

This process will involve any combination of observation, canine detection, search equipment, manual, electronic and physical search. The Search Specialists may need to search people, vehicles, aircraft, buildings, routes or open space.

Search procedures and equipment have evolved over a number of years, built on experience and safe working practices from around the world. Med-Eng through customer feedback and research, remain at the forefront, providing the necessary equipment and training to meet the needs of the searching community.

NOTE: The BombTec system includes hundreds of components that are manufactured by Med-Eng or sourced from third parties. Every attempt is made to maintain the accuracy of imagery and information in this catalog. However, over time, some components will change or be discontinued at the sole discretion of Med-Eng or its suppliers. Accordingly, equipment shown in this catalog, including specifications and appearance, is subject to change without notice and may differ from the illustrative depictions. For example, weights listed (which include components, pouches and carriers, unless otherwise indicated) may vary. **It is the intention of Med-Eng to provide the capability offered by each component, regardless of product evolution such as colour or physical attributes.** If you have questions about the size, weight, composition or appearance of equipment in this catalog, please contact your authorized Med-Eng representative.

The Search Product Specifications take precedence over this Catalogue and are available from your authorized Med-Eng representative. Please refer to the Product Specifications when ordering or inspecting customer orders.



SEARCH APPLICATION

The widely held view that search is confined to peacetime counter terrorist operations significantly limits the application of highly effective capability across the spectrum of operations.

FORCE PROTECTION

Search is a major component of Force Protection. The searching of persons and vehicles on entry to government establishments, the search for command or victim operated or timed munitions on transit routes, the location of missing/kidnapped government personnel and theft prevention are key search contributions.

COUNTER TERRORISM/ INSURGENCY

Search operations undertaken in the wider community contribute to the frustrating of enemy aims and the protection of the population at large. It includes the denial of enemy resources and the search for explosive devices targeted against civilian personnel and property.

SMUGGLING PREVENTION

Search in support of smuggling prevention and sanction enforcement includes reducing the flow of weapons to terrorists and the interdiction of drugs and other items of contraband both in-country and at national borders.

CRIME INVESTIGATION

Search facilitates both the recovery of stolen goods and the investigation of crime including the gathering of forensic evidence.

MISSING/HIDING PERSON LOCATION

People go missing or hide for a variety of reasons. It includes those who are lost, kidnapped, murdered, injured or have suffered mental trauma. All these categories occur both in peace and in conflict environments, as does the need to locate OP parties and other stay behind forces.

EXPLOSIVE ORDNANCE DISPOSAL (EOD)

EOD tasks, whether Conventional Munition Disposal (CMD), Improvised Explosive Device Disposal (IEDD) or Weapons of Mass Destruction Disposal (WMDD), will usually involve several phases. Search skills and equipment contribute to threat isolation, successful location and safe access.

COUNTERMINE OPERATIONS

Combat Engineer countermine training is based on the premise that landmines will be deployed in a disciplined and conventional manner in accordance with the Geneva Convention. When the use of mines is undisciplined (no minefield markings or regular pattern) or unconventional (used as part of a booby trap) search training is critical to safe location.

SEARCH EQUIPMENT

Search equipment ranges from basic tools such as screwdrivers and flashlights to highly sophisticated detectors.

SUMMARY

The full potential of systematic search has yet to be exploited but many thousands of successful operations are testimony to the utility of search in locating a wide range of targets in a safe and effective manner; search saves lives and property.

The Med-Eng BombTec™ system enables EOD Teams and Search Operators to meet their specific operational requirements by selecting a set of modules based on core and enhanced capabilities.

SEARCH KITS

This Section outlines the Search equipment which provide a core capability, allowing the End User to select a comprehensive equipment set with the minimum of fuss. Each of these Kits can be enhanced with the addition of other Search Modules. In addition, the Search operative can customise the kit by adding additional Search, HAL or tool modules to fully customise their kit to meet given operational requirements.



CORE SEARCH KIT



P/N 8005352

A personal issue search kit supplied in a suitable clam-shell leg bag. Enables visual search, physical search, access, marking, stabilisation and provides additional planning components.

The pouches are made from rugged, abrasion-resistant fabric and features a mesh pocket on the interior lid, and elastic loops on the interior base. The pouch has a double slider zipper closure. The rear of the pouch features Velcro Hook and two MOLLE straps with snaps to provide a variety of attachment options.

The Leg Bag provides the ability to carry the small items in an easily accessible location without impeding the user's mobility. The main zipper compartment houses small pouches which may be repositioned across the Velcro-lined surface to suit individual requirements. In addition, the Leg Bag includes several external pockets with Velcro closures. These are ideal for frequently accessed tools. It also has an array of elastic MOLLE straps.

Dimensions (L x W x H)	250mm x 190mm x 125mm	10" x 7.5" x 5"
Weight	8.98kg	19.80lb

This kit contains consumables that are delivered in bulk; the Leg Bag is intended to be used for carrying a smaller quantity needed on a mission.

PLANNING

- 2x Write in the rain notebook

VISUAL SEARCH

- 1x High-power Handheld Flashlight
- 1x Headlamp
- 1x Dental Mirror
- 1x Telescopic Inspection Mirror
- 1x Compact Monocular

PHYSICAL SEARCH

- 1x Collapsible Tripwire Feeler
- 1x Laser Tripwire Feeler
- 1x Mine Probe
- 1x 2" Paint Brush
- 50pair x Nitrile Gloves
- 1x Tactical Handheld (Metal) Detector

ACCESS

- 1x Multi-driver
- 1x Seizer 150mm (Basic Grip Mod)
- 1x Standard Multi-Tool (600 series)
- 1x Magnetic Retriever

MARKING

- 1x Light Stick Module
 - 30x Red Light stick
 - 30x Green Light stick
 - 30x Yellow Light Stick
- 5x Paint Crayon
- 6x Mine Tape White
- 6x Mine Tape Orange
- 20x Plastic Stake, 6in
- **STABILISATION**
- 10x Electrical Tape
- 650x Cable Ties (Assorted)
- Assorted Pins

LEG BAG

- Internal Pouch 10
- Internal Pouch 11

STANDARD SEARCH KIT



P/N 8005353

Team level search kit supplied in the leg bag and backpack. This kit enables visual search, physical search, access, marking, stabilisation and provides additional planning components. This kit is built on the Core Kit adding additional tools and equipment.

Please see next page for equipment list.

The Backpack is covered in Velcro® strips permitting each of the modules to be secured internally or externally. As with the modular approach to the entire BombTec product line, individual modules can be removed and attached to MOLLE straps on other carriers.

The Leg Bag provides the ability to carry the small items in an easily accessible location without impeding the user's mobility. The main zipper compartment houses small pouches which may be repositioned across the Velcro-lined surface to suit individual requirements. In addition, the Leg Bag includes several external pockets with Velcro closures. These are ideal for frequently accessed tools. It also has an array of elastic MOLLE straps.

The pouches are made from rugged, abrasion-resistant fabric and feature a mesh pocket on the interior lid, and elastic loops on the interior base. Each pouch has a double slider zipper closure. The rear of each pouch features Velcro Hook and two MOLLE straps with snaps to provide a variety of attachment options.



Leg Bag

Backpack with Components (As shipped)*

Dimensions (L x W x H)	565mm x 387 mm x 229mm	22.25" x 15.25" x 9"
Weight	19.79kg	43.62lb

* Listed weight does not include the Tape, Glue and Tie Module, Light Stick Module, and Expendable Marking Module, which are packaged separately at time of shipping. These modules contain consumable items which are delivered in bulk and are added to the Backpack by the user as needed.

STANDARD SEARCH KIT, CONTINUED

LEG BAG

- 1x Multi-Driver
- 1x Seizer 150mm
- 1x Multi-Tool
- 1x Paint Brush 2"
- 1x Magnetic Retriever
- 1x High-powered Handheld Flashlight
- 1x Headlamp
- 1x Dental Mirror
- 1x Telescopic Inspection Mirror
- 1x Compact Monocular
- 1x Collapsible Tripwire Feeler
- 1x Laser Tripwire Detector
- 1x Mine Probe
- 50pair Nitrile Gloves
- Internal Pouch 10
- Internal Pouch 11

BACKPACK

- Leg Bag (as listed)
- Tape, Glue & Tie Module*
 - 10x Electrical Tape
 - 650x Cable Ties
 - 6x Duct Tape 2"
 - 3x Super Glue
 - 3x Epoxy (twin tube)
 - External Pouch 52
- Manual Recording Module***
 - 12x Marker Pens
 - 300x Self-adhesive Labels
 - 1x Weatherwriter Clipboard
 - 2x Write-in-the-Rain Notebook
 - 10x Mechanical Pencils
- Electronic Recording Module
 - 1x Waterproof Digital Camera
 - 1x SD Memory Card
 - 1x Digital Voice Recorder
 - Internal Pouch 12
- Small Opening Retrieval Module
 - 1x Seizer Long
 - 1x Retriever Hook
 - 1x Magnetic Retriever
 - 1x Flexible Light
 - 1x Dental Mirror
 - Internal Pouch 14

- Expendable Marking Module*
 - 5x Paint Crayon
 - 3x Chalk Line Powder Bottle
 - 50x Drain Seal Self-adhesive
 - 6x Mine Tape (white)
 - 6x Mine Tape (orange)
 - Internal Pouch 12
- Location Marking Module
 - 20x Mine Markers (red)
 - 20x Mine Markers (white)
 - External Pouch 33
- Light Stick Module*
 - 30x Chemlight Green
 - 30x Chemlight Yellow
 - 30x Chemlight Red
 - Internal Pouch 12
- 2x Manhole Lifters (Internal Pouch 11)
- 1x Magnetic Light Bar
- 1x Laser Distance Measurer
- 1x Digital Recording Borescope
- 1x Binoculars
- 1x Metal Detector Handheld** (Internal Pouch 14)

* These modules contain consumable items which are delivered in bulk and are added to the Backpack by the user as needed.

** This higher specification Handheld Metal Detector replaces the basic detector supplied in the Core Kit.

*** The Manual Recording Module is supplied inside the aluminum Weatherwriter Clipboard.



ENHANCED SEARCH KIT, CONTINUED

LEG BAG

- 1x Multi-Driver
- 1x Seizer 150mm
- 1x Multi-Tool
- 1x Paint Brush 2"
- 1x Magnetic Retriever
- 1x High-powered Handheld Flashlight
- 1x Headlamp
- 1x Dental Mirror
- 1x Telescopic Inspection Mirror
- 1x Compact Monocular
- 1x Collapsible Tripwire Feeler
- 1x Laser Tripwire Detector
- 1x Mine Probe
- Internal Pouch 10
- Internal Pouch 11

BACKPACK

- Leg Bag (as listed)
- Tape, Glue & Tie Module*
 - 10x Electrical Tape
 - 650x Cable Ties
 - 6x Duct Tape 2"
 - 3x Super Glue
 - 3x Epoxy (twin tube)
 - External Pouch 52
- Manual Recording Module***
 - 12x Marker Pens
 - 300x Self-adhesive Labels
 - 1x Weatherwriter Clipboard
 - 2x Write-in-the-Rain Notebook
 - 10x Mechanical Pencils
- Electronic Recording Module
 - 1x Waterproof Digital Camera
 - 1x SD Memory Card
 - 1x Digital Voice Recorder
 - Internal Pouch 12

- Small Opening Retrieval Module
 - 1x Seizer Long
 - 1x Retriever Hook
 - 1x Magnetic Retriever
 - 1x Flexible Light
 - 1x Dental Mirror
 - Internal Pouch 14
- Expendable Marking Module*
 - 5x Paint Crayon
 - 3x Chalk Line Powder Bottle
 - 50x Drain Seal Self-adhesive
 - 6x Mine Tape (white)
 - 6x Mine Tape (orange)
 - Internal Pouch 12
- Location Marking Module
 - 20x Mine Markers (red)
 - 20x Mine Markers (white)
 - External Pouch 33
- Light Stick Module*
 - 30x Chemlight Green
 - 30x Chemlight Yellow
 - 30x Chemlight Red
 - Internal Pouch 12
- 2x Manhole Lifters (Internal Pouch 11)
- 1x Magnetic Light Bar
- 1x Laser Distance Measurer
- 1x Digital Recording Borescope
- 1x Binoculars
- 1x Metal Detector Handheld** (Internal Pouch 14)
- Basic Contamination Protection Module*
 - 60x Disposable Mask
 - 25x Disposable Coverall
 - 24x Disposable Safety Glasses
 - 100pair Nitrile Gloves
 - External Pouch 33

DUFFLE BAG

- Basic Survey Module
 - 1x Tape Measure 8m
 - 1x Digital Measuring Wheel
 - 1x Fiberglass Open Reel 100m
 - 6x Mine Tape white
 - 6x Mine Tape orange
 - 200x Flag, Crime Scene orange
- 1x Electrical & Valve Lockout/Tagout Set
- 1x Portable Floodlight
- 1x Telescopic Mirror Kit

* These modules contain consumable items which are delivered in bulk and are added to the Backpack by the user as needed.

** This higher specification Handheld Metal Detector replaces the basic detector supplied in the Core Kit.

*** The Manual Recording Module is supplied inside the aluminum Weatherwriter Clipboard.

TC 1080 TELESCOPIC CAMERA



P/N 4984651

The TC 1080 Telescopic Camera provides the ability to visually search and capture imagery of areas that are difficult to reach or see into. The system includes a high resolution video camera and an Android device to display the live image, and record photos and video.

The TC 1080 is ideal for searching for hidden threats, suspicious objects, contraband, drugs, and other targets. Its powerful lights illuminate dark areas, such as under vehicles, above ceiling tiles, and tunnels/culverts.

This lightweight system is ideal for:

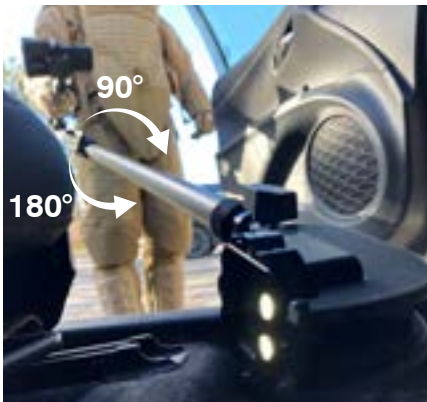
- Vehicle Checkpoints
- VIP Security
- Building Search
- Port Security
- Military Operations
- Public Safety
- Explosive Threat Search

Camera Rotation

The telescopic pole with camera can be rotated 90° to the left and 180° to the right (270° in total) to search a wide field of view, while they remain stationary

Up Is Always Up

The TC 1080 can be set to always display the horizon at the bottom of the Android screen, even as the user rotates the camera head.



TC 1080

Ergonomic Handle

The pistol grip and forearm cradle form a natural handle. The system can be comfortably held in either the left or right hand. The Android device screen can be easily rotated and locked into a preferred position.

Lightweight

The TC 1080 is remarkably lightweight and can easily be held by the user in one hand and aimed in a controlled manner.

Excellent Reach

The telescopic pole measures just over 3m (10'), and can be extended or retracted to the desired length, without any tools.

Single Integrated Power Supply

The camera is conveniently powered by the Android device battery for up to 20 hours. There is no need for a second battery to carry or charge.

Weather Resistant

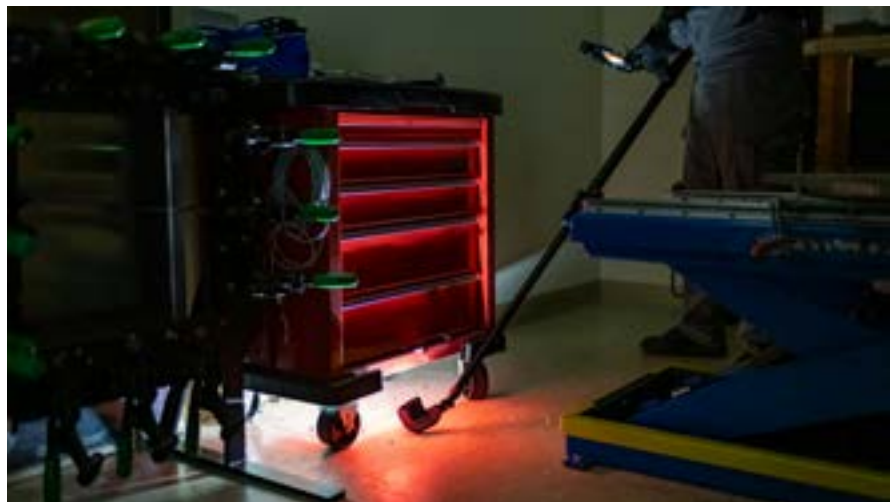
The system is rugged and can be used in rainy and snowy conditions, as well as in hot and cold situations.

Ease of Use

The TC 1080 requires no tools to set up and adjust, and works equally well for right or left handed users. No formal training is required to use the system and benefit from the app.

Illuminate Dark Spaces

The camera head has an integrated lighting system for use in dark spaces, such as under a vehicle, in a culvert, inside a shipping container or under furniture.



SEARCH KITS



P/N 1000898

TACTICAL MIRROR

A compact search mirror fitted with convex mirror, telescopic arm and miniature flashlight. The mirror can be adjusted for an angled view and provides a wide field of view. The telescopic handle is completely rigid to ensure a stable image. The item folds flat for carrying and storage. The search mirror can be used by the operator to conduct a visual check as part of HAL® procedures or for general search duties.



P/N 4974462

UNDER VEHICLE SEARCH MIRROR

The Under-Vehicle Search Mirror (UVSM) is a wide-angle illuminated convex mirror mounted on castor wheels which is used for searching the underside of vehicles. The unit has a long handle, with a non-slip grip, which swings down to the horizontal for maximum reach under vehicles. Illumination is provided by a magnetically attached LED wand which can be detached and used as a search lamp.

Mirror:	330x270x16mm (13" x 10.5" x 0.62")
Handle:	1000mm x 29mm (39.25" x 1.12")
Castors:	21mm x 50mm (7/8" x 2")
Platform:	360x425x102mm (14.125" x 16.75" x 4")
Minimum Clearance:	102mm (4")
Power Supply:	4 x AA batteries (supplied)
Materials:	Painted Aluminium, Steel, Plastic, Glass, Rubber



P/N 1005868

TELESCOPIC SEARCH KIT (TSK)

A convenient and highly effective search kit for ships, vehicles and buildings, supplied in a robust fitted storage case. The case provides protection to the Mirrors when not in use - the period when Mirrors are most vulnerable to damage. The Kit contains 1 Telescopic Mirror Arm and 5 Interchangeable Mirrors.

Interchangeable Mirrors

All mirrors are set in black polypropylene frames with screw fixing studs.

SEARCH KITS



P/N 4124812

SEARCH ENDOSCOPE & MIRROR KIT (SEMK)

The SEMK Kit contains a side-viewing endoscope, rechargeable battery pack and charger, in addition to a telescopic mirror arm, short mirror arm with flashlight and interchangeable screw-on mirrors.

- Endoscope: 9.65mm (0.38in) outside diameter; 350mm (13.8in) working length; 30-degree field of viewing; 10w lamp
- Telescopic Arm (CEM): Extended 1425mm (56.1in); Closed 530mm (20.87in); Handle diameter 36mm (1.42in); Weight 510g (1.12lb)
- Mirror arm/torch (UMC): 470mm (18.5in) length, fixed 45-degree mirror mount, flashlight
- Mirrors: SML, SMR & SMC



P/N 5078453

METAL DETECTOR, TACTICAL

The Garrett Tactical Handheld Metal Detector has been designed as an easy to use, ultra-sensitive detector capable of detecting ferrous, non-ferrous and stainless-steel objects.

Dimensions:
 Length: 220mm
 Width (probe): 29mm
 Width (body): 41mm
 Weight: 200g
 Sensitivity: 360° detection field, with 101mm detection range
 Operating Temperature: -37°C to +70°C
 Ingress: IP66
 Battery: 9v PP3, 6LR61 or equivalent
 Operating Time: 70 hours @ 25°C (alkaline battery, supplied)



P/N 0600172

METAL DETECTOR, DEEP TISSUE

The ER3000 has been specifically designed for the detection and location of tiny foreign metal objects that have been concealed or ingested deep within the skin tissues or body cavities.

ER3000 has the ability to detect metal fragments that are concealed or buried deep within the skin tissue making the Adams ER3000 a major step forward in the detection of weapons and contraband concealed within the body cavities.

Dimensions
 Length: 360mm
 Width (probe): 105mm
 Width (body): 55mm
 Height: 35mm
 Weight: 395g
 Sensitivity: Better than 0.03g
 Operating Temperature: 20°C to +65°C
 Humidity: 98%
 Ingress: IP64
 Battery: 9v PP3, 6LR61 or equivalent (battery included)

Power Consumption
 Active no detection: <1 mA
 Active metal detected: 6.5 mA

Operating Time
 360 hours @ 25°C (alkaline battery)
 100 hours @ 25°C (rechargeable)

SEARCH MODULES

This Section provides a number of Search Modules which group functional tools into an individual pouch or carrier (size dependent). Certain Modules are incorporated into the larger Kits detailed in the previous pages. In addition, the search operative can customise the kit by adding additional search, HAL or tool modules to their kit.



MANUAL RECORDING MODULE



P/N 8005099

This module provides the operator with the materials to record notes and label items for identification purposes.

- 12x Marker Pens
- 300x Self-Adhesive Labels White (50x37mm)
- 2x Write in the Rain Notebook
- 10x Mechanical Pencils
- 1x Weatherwriter Clipboard

Dimensions (L x W x H)	229mm x 356mm x 38mm	9 x 14 x 1.5"
Weight	1.30kg	2.87lb

Note: The Clipboard contains the contents of this module. There is no soft goods pouch.

ELECTRONIC RECORDING MODULE



P/N 8005101

The Recording Module provides the user with the necessary tools to capture digital information from a task or scene whether audio or visual. Both sets of media allow comprehensive information to be captured and used for subsequent briefings and/or detailed report writing.

The pouch is made from rugged, abrasion-resistant fabric and features a mesh pocket on the interior lid, and elastic loops on the interior base. The pouch has a double slider zipper closure. The rear of the pouch features Velcro Hook and two MOLLE straps with snaps to provide a variety of attachment options.

- 1x Waterproof Digital Camera
- 1x SD Memory Card
- 1x Digital Voice Recorder
- Internal Pouch 12

Dimensions (L x W x H)	90mm x 180mm x 75mm	3.5" x 7" x 3"
Weight	0.45kg	0.99lb

SMALL OPENING RETRIEVAL MODULE



P/N 8005104

Seizer Long. A 12-inch locking clamp, straight forceps/seizer which are black coated.

Retriever Hook. This precision mechanical pick-up tool is ideal to extend your reach 60cm (23.5") and grab small objects from tight areas and difficult to see spots. The Retriever Hook has a flexible shaft that makes working in awkward spaces easy, the four-pronged claw readily latches onto small items for quick retrieval.

The **Magnetic Retriever** features a telescopic reach which extends providing a pickup reach of 65cm (25.5") and is ideal to extend your reach and retrieve metallic objects from tight areas. Pull capacity of 908g (2lb).

The rugged **Flexible Light** lets you shine light where it's needed whether working in confined spaces, it allows you to work hands free in bright LED light. A magnetic base attaches the light to metal surfaces and the 38cm (12") flexible probe directs 65 lumens of bright LED light. The supplied standard AA batteries provides 7 hours of constant illumination.

The **Dental Mirror** lets you inspect hard to reach areas where conventional inspection mirrors are too large. The mirror is held on a durable lightweight ABS plastic handle

The pouch is made from rugged, abrasion-resistant fabric and features a mesh pocket on the interior lid, and elastic loops on the interior base. The pouch has a double slider zipper closure. The rear of the pouch features Velcro Hook and two MOLLE straps with snaps to provide a variety of attachment options.

- 1x Seizer Long
- 1x Retriever Hook
- 1x Magnetic Retriever
- 1x Flexible Light
- 1x Dental Mirror
- Internal Pouch 14



Close up view of the extendable claws of the Retriever Hook.

Dimensions (L x W x H)	90mm x 360mm x 75mm	3.5" x 14" x 3"
Weight	0.65kg	1.43lb

BASIC CONTAMINATION PROTECTION MODULE



P/N 8005106

N95 Disposable Mask which provides protection against dust, dirt and oil-free air. The mask comes with an adjustable nose clip for a snug comfortable fit and it meets NIOSH N95 standards.

Disposable Coverall which is industry leading: best tear and puncture resistance providing excellent protection against hazardous dry dust and aerosols and non-hazardous liquid splash. The Coverall has a zip front, elastic wrist and ankles, booties (non-skid) and hood.

Disposable Safety Glasses with frameless, anti-scratch, wraparound lenses for optimum vision. The glasses feature a non-slip fit and provide 99.9% UV protection.

Nitrile Gloves which are puncture and abrasion resistant, easy on with good tactile sensitivity and a beaded cuff.

The External Pouch 33 is made from rugged, abrasion-resistant fabric, and features a pass-through sleeve on the interior lid. The interior base has ample room and features a drawstring closure. Side closure zippers can be opened to allow the pouch depth to expand from 64mm (2.5") to 127mm (5") in order to accommodate larger product if required. The rear of the pouch features four MOLLE straps with snaps to provide a variety of attachment options, and the pouch is secured with two side release buckles.

- 60x Disposable Mask
- 25x Disposable Coverall, Large
- 24x Disposable Safety Glasses
- 100x Nitrile Gloves, Large (pairs)
- External Pouch 33

The contents of this module are delivered in bulk; the External Pouch 33 is intended to be used for carrying a smaller quantity needed on a mission.

Dimensions (L x W x H)	279mm x 127mm x 254mm	11" x 5" x 10"
Weight	3.10kg	6.83lb

BASIC SURVEY MODULE



P/N 8005108

The 8m Tape Measure is an essential part of the Survey Module and has been designed to be compact and lightweight. The ergonomic high-impact case is comfortable to use, while the tylon coated blade offers greater durability and wear, it features large easy to read metric and imperial measurements.

The Measuring Wheel is a digital tool controlled via a telescopic handle with a range of extension from 17” to 38”. The Roller features an easy to read magnified 5-digit counter which measures to a maximum of 9,999.9m, the counter can be reset by tapping the raised reset button with finger or foot.

Note: The Measuring Roller is only supplied in metric.

The Fiberglass Open Reel has an open 4-arm frame design which does not trap dirt in the case. The durable, lightweight, high-visibility case makes it easy to find, handle and rewind. The 100m yellow clad fibreglass blade shows both metric and imperial measurements and is impervious to moisture. There is also a folding end hook for true-zero measurements.

Polyplastic flagging tape (more commonly referred to as mine tape) which has a highly visible solid colour and can be used with marking flags for even better visibility and can be used to demarcate hazardous areas, entry points, edges of cleared areas, etc. Supplied in white and orange rolls. Each roll is 13/16 inch wide and 300 feet long.

The Crime Scene Flags are ideal for marking boundaries, edges of search areas or pinpointing the location of evidence, etc. especially where mine tap cannot be readily secured. It goes without saying, the crime scene flags can be used in conjunction with coloured mine tape.

This Duffel Bag has looped handles and includes straps. Made of cotton canvas, it features a rubberized bottom both inside and out to help keep equipment dry on wet ground. The bag has numerous pockets for large and small items both on the exterior and interior of the bag, with zippered closure.

- 1x Tape Measure 8m
- 1x Measuring Wheel
- 1x Fiberglass Open Reel 100m
- 6x Mine Tape White
- 6x Mine Tape Orange
- 200x Flag, Crime Scene Orange
- Duffel Bag

Dimensions (L x W x H)	864mm x 382mm x 305mm	34” x 15” x 12”
Weight	10.20kg	22.48lb



EXPENDABLE MARKING MODULE



P/N 8005110

This module provides the Operator the ability to quickly mark and identify objects and small areas for investigation, using several different methods.

This module contains a generous supply of each component, more than what can be contained in Internal Pouch 12. The pouch is intended to be used for carrying only the components required for the task at hand and can be resupplied from the extra quantities provided.

Paint Crayon - This bright orange weather and UV-resistant solid paint crayon marks through oily, icy, wet, dry, and cold surfaces. It works effectively in temperatures ranging from -45°C to 66°C (-50°F to 150°F). It is lead-free and non-toxic and marks easily on metal, glass, plastic, lumber, cement, cardboard and rubber, as well as rough, rusty, and dirty surfaces

Chalk Line Powder Bottle - The 8oz marking chalk may be used to mark objects or areas of interest. It is applied directly to the surface area by dispensing the chalk using the squeeze bottle container. It marks the area with a bright blue chalk, made of calcium carbonate and silica crystalline. It is odourless and resists moisture.

Drain Seal Self-Adhesive - The self-adhesive drain seals are made from vulcanized rubber and feature two lines of interlocking security cuts which are intended to be positioned on either side of the opening. If opened, the seal tears along this perforation, while remaining in place to show signs of tampering. Each seal has two strips of mastic for ease of application. The seal remains pliable when used for uneven or unstable surfaces with excellent resistance to harsh environmental conditions. Each seal measures 70mm x 70mm (2.8" x 2.8").

Mine Tape - White and Orange - Highly visible polyethylene white and orange flagging tape with a thickness of 2 mil. It is 30mm (1.2") wide, UV resistant and is functional in a temperature range of -29°C to 68°C (-20°F to 155°F). Can be used in conjunction with marking flags for enhanced visibility.

Internal Pouch 12 - This pouch is made from rugged, abrasion-resistant fabric and features a mesh pocket on the interior lid, and elastic loops on the interior base. The pouch has a double slider zipper closure. The rear of the pouch features Velcro Hook and two MOLLE straps with snaps to provide a variety of attachment options. The pouch dimensions are 90mm x 180mm x 75mm (3.5" x 7" x 3").

- 6x Mine Tape (White and Orange)
- 3x Chalk Line Powder Bottle
- 5x Paint Crayon
- 50x Drain Seal Self-Adhesive
- Internal Pouch 12

This module contains a generous supply of each component, more than what can be contained in Internal Pouch 12. The pouch is intended to be used for carrying only the components required for the task at hand and can be resupplied from the extra quantities provided.

LIGHTSTICK MODULE



P/N 4985828

The Lightstick Module is intended enables the operator to clearly mark an item or area of interest, safe route, or working area. The Lightsticks can be used to mark objects or points of interest both above and below the water line in low-light conditions.

The Module is supplied with green, red and yellow lightsticks, they are single use items and achieve full brightness within 10 minutes after activation. Each lightstick is 152mm long and provides emergency light for twelve (12) hours. They are individually packaged and have a long shelf life.

The pouch is made from rugged, abrasion-resistant fabric and features a mesh pockets on the interior lid, and elastic loops on the interior base. The pouch has a double slider zipper closure. The rear of the pouch features Velcro Hook and two MOLLE straps with snaps to provide a variety of attachment options.

- 30x Green Lightstick
- 30x Yellow Lightstick
- 30x Red Lightstick
- Internal Pouch 12

The contents of this module are delivered in bulk; the Internal Pouch 12 is intended to be used for carrying a smaller quantity needed on a mission.

Dimensions (L x W x H)	90mm x 180mm x 75mm	3.5" x 7" x 3"
Weight	2.00kg	4.41lb

LOCATION MARKING MODULE



P/N 8005112

Two sets of coloured (one set red, the other white) plastic cones approximately 8" (203mm) in diameter.

The External Pouch 33 is made from rugged, abrasion-resistant fabric, and features a pass-through sleeve on the interior lid. The interior base has ample room and features a drawstring closure. Side closure zippers can be opened to allow the pouch depth to expand from 64mm (2.5") to 127mm (5") in order to accommodate larger product if required. The rear of the pouch features four MOLLE straps with snaps to provide a variety of attachment options, and the pouch is secured with two side release buckles.

- 20x Mine Markers, red
- 20x Mine Markers, white
- External Pouch 33

Dimensions (L x W x H)	279mm x 127mm x 254mm	11" x 5" x 10"
Weight	2.80kg	6.17lb

TOOLS

This Section outlines Med-Eng's BombTec™ capability and equipment recommendations for a wide spectrum of operations where a myriad of tools is required for reconnaissance, access, search, EOD, intelligence and/or forensic recovery.

The Med-Eng BombTec™ system enable EOD Teams and Search Operators to meet their specific operational requirements by selecting kits and/or a set of modules based on core and enhanced capabilities.

The equipment listed in this Section will allow operatives the ability to select kits and/or modules fully customised to meet their specific operational requirements.

NOTE: The BombTec system includes hundreds of components that are manufactured by Med-Eng or sourced from third parties. Every attempt is made to maintain the accuracy of imagery and information in this catalog. However, over time, some components will change or be discontinued at the sole discretion of Med-Eng or its suppliers. Accordingly, equipment shown in this catalog, including specifications and appearance, is subject to change without notice and may differ from the illustrative depictions. For example, weights listed (which include components, pouches and carriers, unless otherwise indicated) may vary. **It is the intention of Med-Eng to provide the capability offered by each component, regardless of product evolution such as colour or physical attributes.** If you have questions about the size, weight, composition or appearance of equipment in this catalog, please contact your authorized Med-Eng representative.

The Tools Product Specifications take precedence over this Catalogue and are available from your authorized Med-Eng representative. Please refer to the Product Specifications when ordering or inspecting customer orders.



TOOL KITS

This Section outlines the Tools which provide a myriad of core capabilities, allowing the End User to select a comprehensive equipment set with the minimum of fuss. Each of these Kits can be enhanced with the addition of other Tools Modules. In addition, the operative can customise the kit by adding additional Tool, Search or HAL modules to fully customise their kit to meet given operational requirements.

INDIVIDUAL TOOL KIT



P/N 8005037

The BombTec Individual Tool Kit provides a convenient small tool kit for field expedient general operations where hand-held tools are required. This Kit is presented in the BombTec Leg Bag, some of the tools are held in the bags internal pockets or straps, other tools are held in the internal pouches 10 and 11 allowing them to be segregated from other tools. The smaller internal pouches can be affixed to the Leg Bag utilizing Velcro patches.

The Leg Bag provides the ability to carry the small items in an easily accessible location without impeding the user’s mobility. The main zipper compartment houses small pouches which may be repositioned across the Velcro-lined surface to suit individual requirements. In addition, the Leg Bag includes several external pockets with Velcro closures. These are ideal for frequently accessed tools. It also has an array of elastic MOLLE straps.

The pouches are made from rugged, abrasion-resistant fabric and feature a mesh pocket on the interior lid, and elastic loops on the interior base. Each pouch has a double slider zipper closure. The rear of each pouch features Velcro Hook and two MOLLE straps with snaps to provide a variety of attachment options.

- 1x Folding Hex Key Module (Pouch 11)
- 1x Multi-driver (6 in 1)
- 1x Vice Grip Small
- 1x Box Cutter
- 1x Survival Saw
- 1x Paramedic Scissors
- 1x Straight Cut Tin Snips
- 1x Hemostats Steel Small
- 10x Electrical Tape
- 650x Cable Ties (assorted)
- 1x Standard Multi-Tool
- 1x Headlamp
- 1x Cloth Ruler
- 1x Dental Mirror
- Internal Pouch 10 (containing 1x Cloth Ruler & 1x Survival Saw)
- BombTec™ Leg Bag

Dimensions (L x W x H)	250mm x 190mm x 125mm	10" x 7.5" x 5"
Weight	4.58kg	10.10lb

The cable ties and electrical tape are delivered in bulk; the Leg Bag is intended to be used for carrying a smaller quantity needed on a mission.

CORE TOOL KIT



P/N 8005042

The BombTec™ Core Tool Kit contains a comprehensive selection of over 60 hand tools for Access, Investigation and Render Safe Procedures during EOD/IEDD tasks. The complete kit is supplied in a soft-sided carrying roll (with easy-grip handle) for convenient access and quick tool selection.

The Tool Roll, standard is made from a heavy duty black Cordura fabric and features two rows of pockets for the supplied tools to slot into. There is a single webbing loop in the centre to secure long heavy tools such as the Claw Hammer in this case. Along the top edge is a folding flap which is used to retain tools prior to rolling. Once rolled two straps close the roll and are secured with two adjustable buckles

- 1x Multi-driver (6 in 1)
- 1x Adjustable Wrench 8"
- 1x Hex Key Set L-Shaped, metric
- 1x Hex Key Set L-Shaped, imperial
- 1x Vice Grip Large
- 3pc Plier Set
- 1x 8" Channel Lock
- 1x X-Acto Knife
- 1x Box Cutter
- 1x Keyhole Hacksaw
- 1x Paramedic Scissors
- 1x Straight Cut Tin Snips
- 4pc Tweezer Set
- 1x Seizer 150mm
- 10x Electrical Tape
- 650x Cable Ties (assorted)
- 1x Epoxy – twin tube*
- 1x Claw Hammer
- 1x Chisel, Cold 12 x 125mm
- 1x Pry Bar
- 1x Wire Stripper/Crimper Tool
- 1x 2" Paint Brush
- 1x High-power Handheld Flashlight
- 1x Tape Measure 8m
- 1x Dental Mirror
- Tool Roll, Standard

Dimensions (L x W x H)	455mm x 200mm x 150mm	18" x 8" x 6"
Weight	8.43kg	18.58kg

The cable ties and electrical tape are delivered in bulk; the Tool Roll is intended to be used for carrying a smaller quantity needed on a mission.

* Product has a 24-month shelf-life

STANDARD TOOL KIT



P/N 8005044

The BombTec™ Standard Tool Kit contains a comprehensive selection of over 200 hand and powered tools for Access, Investigation and Render Safe Procedures during EOD/IEDD tasks.

The BombTec Backpack Kit is a rugged Backpack. Internally the Backpack is covered in Velcro® strips permitting each of the modules to be secured internally or externally. As with the modular approach to the entire BombTec product line, individual modules can be removed and attached to MOLLE straps on other backpacks or carriers.

This Kit includes pre-established Tool Modules and typically the remainder of the tools are placed into the Tool Roll, Standard.

The Tool Roll, standard is made from a heavy duty black Cordura fabric and features two rows of pockets for the supplied tools to slot into. There is a single webbing loop in the centre to secure long heavy tools such as the Claw Hammer in this case. Along the top edge is a folding flap which is used to retain tools prior to rolling. Once rolled two straps close the roll and are secured with two adjustable buckles.

Backpack w Components (As shipped)*

Dimensions (L x W x H)	565mm x 387mm x 229mm	22.25" x 15.25" x 9"
Weight	26.86kg	59.19lb

* Listed weight does not include the Tape, Glue and Tie Module, which is packaged separately at time of shipping. This module contains consumable items which are delivered in bulk and are added to the Backpack by the user as needed.

- 1x Standard Wrench Module
- 1x Precision Tools Module
- 1x Non-conductive Tool Module
- 1x Specialty Clamp Module
- 1x Tape, Glue & Tie Module
- 1x Mini Combination Tool Module
- 1x Screwdriver Module
- 1x Plier Module
- 1x Cordless Rotary Tool Module
- 1x 12" Adjustable Wrench
- 1x Deep Socket Combo Set
- 1x Hex Key Set L-Shaped
- 1x Vice Grip (single) Large
- 1x Vice Grip (needle nose)
- 1x Fencing Pliers
- 1x 8" Channel Lock
- 1x File #1
- 1x Box Cutter
- 1x Keyhole Hacksaw
- 1x Paramedic Scissors
- 1x Straight Cut Tin Snips
- 1x 18" Bolt Cutter
- 1x Seizer 150mm
- 1x Claw Hammer
- 1x Chisel, Cold 12 x 125mm
- 1x Prybar
- 1x Entrenching Tool
- 1x Wire Stripper/Crimper Tool
- 1x 2" Paint Brush
- 1x High-power Handheld Flashlight
- 1x Headlamp
- 1x Tape Measure 8m
- 1x Stud Finder
- Module Pouches
- Tool Roll, Standard
- Backpack



ENHANCED TOOL KIT



P/N 8005351

The BombTec™ Enhanced Tool Kit builds on the already comprehensive Standard Kit providing greater capability including the provision of power tools.

This Kit is supplied in the BombTec™ Backpack, BombTec™ Duffle Bag and a BombTec™ Small Duffle Bag. All the modules are supplied in their own Cordura pouch or Tool Roll. This approach offers the user a significant amount of freedom to customize its packing configuration to suit a variety of missions.

The BombTec Backpack is the main carrier for the BombTec modular system. Its ergonomic design with padded backing fits over protective vests & plate carriers with purpose-built shoulder straps and waistband. The clamshell front zipper-lid permits the pack to be opened while standing upright, exposing a hook-and loop (looped) interior as the attachment surfaces for the module pouches in both the main compartment and the interior of the lid.

The BombTec™ Duffle Bag is a rugged heavy-duty canvas bag ideal to hold large bulky equipment and features a main compartment has a heavy-duty full-length zipper for easy access. In addition, the duffle has three zippered outside pockets and side end pockets. The duffle has a waterproof bottom and is fitted with ergonomic reinforced carry handles and padded shoulder straps.

The Power Tool Module is carried in the BombTec™ Small Duffle Bag. It is made from rugged, abrasion-resistant fabric, and features 1 exterior zip-off pocket, 1 outside end zipper compartment and U-shape top zipper opening, with a Velcro extension flap to ensure secure closure and two durable wrap-around handles. The underside features a rubber panel for protection with exterior bottom feet protectors. The bag has an adjustable/detachable shoulder strap with swivel buckles.

Please see next page for equipment list.



BombTec Backpack
(included)



Small Duffle Bag
(included)

ENHANCED TOOL KIT, CONTINUED

- 1x Standard Wrench Module
- 1x Hex Key Module
- 1x Precision Tools Module
- 1x Non-Conductive Tool Module*
- 1x Solder Module**
- 1x Specialty Clamp Module
- 1x Electrical Diagnostic Module***
- 1x Tape, Glue & Tie Module
- 1x Mini Combination Tool Module
- 1x Screwdriver Module
- 1x Plier Module
- 1x Chisel Module
- 1x Stripped Fastener Module
- 1x Cordless Rotary Tool (Dremel) Module
- 1x Glue Gun Module
- 1x Cordless Power Tool Module
- 1x 8" Adjustable Wrench
- 1x 12" Adjustable Wrench
- 1x Deep Socket Combo Set
- 1x Vice Grip Large
- 1x Vice Grip Needle Nose
- 1x Fencing Pliers
- 1x 8" Channel Lock
- 1x Hole Saw Set
- 1x 1pc File #1
- 1x Box Cutter
- 1x Keyhole Hacksaw
- 1x Wood Saw
- 1x Hacksaw
- 1x Paramedic Scissors
- 1x Straight Cut Tin Snips
- 1x Hand Nibbler
- 1x 30" Collapsible Bolt Cutters
- 1x Seizer 150mm
- 1x Claw Hammer
- 1x 30" Utility Bar
- 1x Chisel, Cold 12 x 125mm
- 1x Pry Bar
- 1x Entrenching Tool
- 1x Wire Stripper/Crimper Tool
- 1x 2" Paint Brush
- 1x High-power Handheld Flashlight
- 1x Headlamp
- 1x Magnetic Light Bar
- 1x Tape Measure 8m
- 2x Gloves Heavy Duty Riggers
- 2x Safety Glasses
- 1x Stud Finder
- Tool Roll, Standard
- BombTec™ Small Duffle Bag
- BombTec™ Duffle Bag
- BombTec™ BackPack

Small Duffle Bag (As shipped)		
Dimensions (L x W x H)	559mm x 241mm x 279mm	22" x 9.5" x 11"
Weight	4.96kg	10.87lb
Duffle Bag (As shipped)		
Dimensions (L x W x H)	864mm x 382mm x 305mm	34" x 15" x 12"
Weight	27.00kg	59.52lb
Backpack with Components (As shipped)****		
Dimensions (L x W x H)	565mm x 387mm x 229mm	22.25" x 15.25" x 9"
Weight	24.70kg	54.45lb
Total Weight****	56.66kg	124.91lb

Notes:

A number of the tools require batteries (non-rechargeable), these are supplied as standard from their respective OEM, replacement batteries require sourcing locally.

*Insulated Screwdriver Set removed from Non-Conductive Module, one set still supplied as part of Electrical Diagnostic Module.

**Item is shipped without Butane gas due to restrictions on shipping Dangerous Goods. Butane gas should be readily available from local suppliers.

***The Multi-meter requires 2x AAA batteries (not included).

**** Listed weight does not include the Tape, Glue and Tie Module, which is packaged separately at time of shipping. This module contains consumable items which are delivered in bulk and are added to the Backpack by the user as needed.

TM 700 TELESCOPIC MANIPULATOR



P/N 4984246

The TM 700 Telescopic Manipulator provides an improved ability for EOD operators and Bomb Technicians to maximize their standoff distance when working in close proximity to a suspect package or explosive device. It enables the user to deploy EOD tools such as a disruptor or X-ray plate, remove obstacles, or handle suspicious packages when use of a robot is not an option and standard operating procedures allow.

The TM 700 can be carried by a shoulder strap, or deployed with its detachable wheel base.

The TM 700 includes a claw that rotates in the vertical axis, a left/right handguard, multiple claw tips, and a battery power indicator. The TM Claw Camera Module is a recommended optional video camera system.

The user has precise electronic control of the claw for smooth operation.

- Pitch rotation 240°
- Claw rotation (left/right continuous) 360°
- Claw closing/opening



Below: Interchangeable claw tips for best grip in a given situation.



L-Shape



Flat



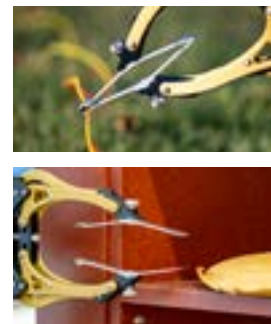
Claw

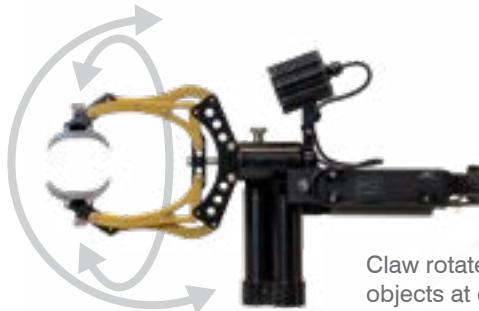


Spikes



Tweezers





Claw rotates to easily grasp objects at difficult angles.



Above:
TM 700 deploying EOD tools.

Left:
Wheel base shown in use, and removed.

Far left:
Handguard can be mounted on left or right hand side.



TM CLAW CAMERA MODULE

P/N 4985722

The TM Claw Camera Module provides enhanced visual capabilities for operating the Med-Eng TM 700 Telescopic Manipulator.

- It is a recommended option that is not included with standard TM 700 configuration.
- Includes a camera that is mounted to the claw and a viewing device mounted to the pole
- Enables the operator to see a target more clearly and to assist when grasping an object in the claw
- Gives visibility into areas that are difficult to access manually, such as under a vehicle or in bushes
- Records High Definition (HD) video and photos for use on site and as criminal evidence
- Weather resistant tablet
- Ball joint allows operator to angle the tablet for optimal viewing, and on their preferred side of the pole



The operator can easily adjust the viewing of the screen. The screen makes it very easy for the operator to record a video or capture an image.



The Claw Camera is provided in its own rugged case but can also be stored inside the TM 700 storage case.



Enhances visibility of the claw and targets when working in obstructed areas.

NON-MAGNETIC TOOL SYSTEM

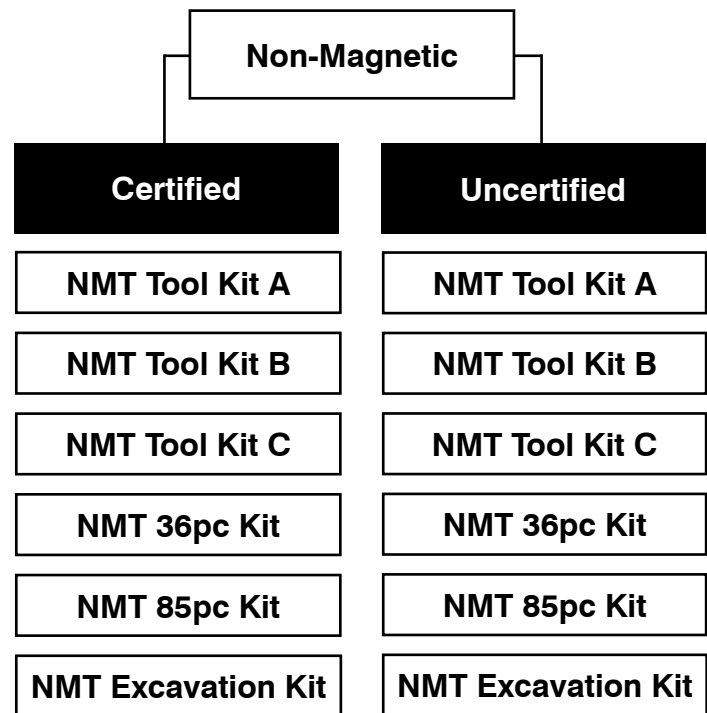
Developed in response to the specific requirements of NATO EOD units, the Non-Magnetic Tool (NMT) System provides explosives disposal specialists with a definitive, dependable and versatile equipment capability to deal with older unexploded ordnance (UXO) whilst meeting the challenges of modern and potentially unknown types of weapons and devices. Experience has proven that all operators can use this equipment with unquestioned confidence.

The legacy of world wars and numerous recent regional conflicts is that EOD teams are frequently exposed to the threat of conventional and chemical/biological-filled UXO. Older UXO can become more hazardous with age as components deteriorate and explosive fillings decay. Modern weapons invariably have sensitive and complicated firing systems. In all cases a particular threat exists from UXO incorporating magnetic influence systems.

For EOD tasks involving magnetically-actuated UXO, when manual entry is made into UXO, or where an external hazard or risk of explosion exists (e.g. close proximity to oil fuel tanks or inside flammable gas-filled compartments) it is essential that all tools and equipment used are made from non-magnetic and non-sparking materials.

All tools within the Non-Magnetic Tool System are manufactured in beryllium copper alloy and conform to the stringent non-magnetic requirements of NATO STANAG 2897 Annex C. Each component is individually tested and certified to this Standard. Components are numbered and marked with the certification.

Kits are also offered in an uncertified configuration at a reduced cost.



NON-MAGNETIC TOOL KITS



NON-MAGNETIC TOOL KIT A

A 36-piece general-purpose set of basic hand tools which includes a selection of screwdrivers, pliers, adjustable wrenches and prying tools for generic, nonspecific EOD tasks including mines/munition disposal operations.

Supplied in a rigid plastic case with foam inserts.

P/N 1000812 Certified
P/N 8003969 Uncertified



NON-MAGNETIC TOOL KIT B

A 71-piece kit which provides both metric and imperial open-end box wrench, socket and Allen-key sets for nonspecific EOD tasks including mines/munition disposal operations.

Supplied in a rigid plastic case with foam inserts.

P/N 1000813 Certified
P/N 8003971 Uncertified



NON-MAGNETIC TOOL KIT C

A 27-piece multi-purpose, adjustable pin wrench set for mines/munitions set-pins and "keep ring" removal and similar tasks.

Supplied in a rigid plastic case with foam inserts.

P/N 1000814 Certified
P/N 8003973 Uncertified

All tools within the Non-Magnetic Tool System are manufactured in beryllium copper alloy and conform to the stringent non-magnetic requirements of NATO STANAG 2897 Annex C. Each component is individually tested and certified to this Standard. Components are numbered and marked with the certification.

Kits are also offered in an uncertified configuration at a reduced cost.

Non-magnetic kits also available in Uncertified configuration at reduced cost.

NON-MAGNETIC TOOL KITS



NON-MAGNETIC 36-PIECE KIT

A 35-piece non-magnetic tool kit for contact EOD operations.

The Tool Kit is supplied in a foam-lined protective carrying bag, also fully certified as non-magnetic.

P/N 1000806 Certified
P/N 8003961 Uncertified



NON-MAGNETIC 85-PIECE KIT

An 85-piece comprehensive non-magnetic tool kit for contact EOD operations.

The Tool Kit is supplied in a foam-lined protective carrying bag, also fully certified as non-magnetic. .

P/N 1000810 Certified
P/N 8003965 Uncertified



NON-MAGNETIC EXCAVATION KIT

A set of non-magnetic Excavation Tools for contact EOD operations.

The Tool Kit is supplied in a foam-lined protective carrying bag, also fully certified as non-magnetic.

P/N 1000807 Certified
P/N 8003945 Uncertified

All tools within the Non-Magnetic Tool System are manufactured in beryllium copper alloy and conform to the stringent non-magnetic requirements of NATO STANAG 2897 Annex C. Each component is individually tested and certified to this Standard. Components are numbered and marked with the certification.

Kits are also offered in an uncertified configuration at a reduced cost.

CONTROLLED DEMOLITION

DUAL INITIATOR DX10U KIT



The DX10U is a safety initiator used for explosive firing, particularly in forced-entry procedures.

The Dual Initiator directly fits threaded NONEL Line or uses the breach block for custom length applications using standard shotgun primers. These lightweight initiators are coated with a hard anodize finish, that won't wear down during repetitive firing. The casing is made of nonmagnetic and non-sparking aircraft strength aluminium.

There are two safety systems to prevent unintentional firing of the initiator and the revised design accommodates both short and long styles of pre-terminated NONEL® line.

The DX10U is supplied with a small pouch.

P/N 1004130

TOOLS MODULES

This Section provides a number of Tool Modules which group functional tools into an individual pouch or carrier (size dependent). Certain Modules are incorporated into the larger Kits detailed in the previous pages. In addition, the operative can customise the kit by adding additional tools, search or HAL modules to their kit.

The Tools Modules is broken down into the following categories:

- Power tools
- Ground clearance and entry tools
- Standard hand tools
- Specialty tools

DEMOLITION TOOLS MODULE



P/N 8004495

The EOD Multi-Tool is many tools in one, providing numerous tools needed to get various EOD/IEDD tasks done safely and properly. It is a practical addition to the MK6 Dual Cap Crimper and TC11A Tube/Fuse Cutter.

The Dual Cap Crimper is a high quality nonmagnetic, non-sparking tool that offers a dual crimp in one stroke. It is manufactured from quality aluminium and the crimper has a hard-anodized finish. Its strong, smooth surface has durable edges for continuous crimping. The Dual Cap Crimper has a Power Punch and Fuse Cutter for clean, precise cuts of detonation cord. The Dual Cap Crimper is the only dual cap crimper approved and used by leading NATO militaries. It offers exceptional quality and reliability and comes with a lifetime warranty.

The Tube/Fuse Cutter is a patented hand tool that is specially designed for precision, accuracy, ease of use and efficiency. It is spring loaded, has a razor-sharp blade and is ideal for all cutting applications including: NONEL tube, fuse and detonation cord from 1/16" to 3/16" in diameter. The cutting base provides an exit for powders to be released as the fuse or cord is being cut. It is made from high strength aluminium and comes with a replaceable blade, and a Powder Punch on one handle.

This module is supplied with a pouch.

- 1x Standard Multi-Tool (600 series)
- 1x Dual Cap Crimper
- 1x Fuse Cutter
- Belt Pouch, Cordura



EOD Multi-Tool



Dual Cap Crimper



Tube/Fuse Cutter

Dimensions (L x W x H):	171mm x 66mm x 47mm	6.73" x 2.60" x 1.85"
Weight:	0.55kg	1.21lb

MANUAL DRILL MODULE



P/N 8004490

This is a manual module where its smooth-running hand crank guard against noise and vibration, also the drill is ideal for use in confined spaces.

Hand Drill - A ratchet mechanism makes this drill ideal for use in confined areas. The three-jaw chuck provides a secure fit for driving round shank drills, hex shank tools, and auger bits up to 7mm (9/32") in diameter.

Drill Bit Set (HSS). This industrial strength, 19-piece metric set can be used on steel, cast iron and most non-ferrous metals. The two-tone black oxide and bronze finish provides ideal chip flow and resistance to abrasion.

Bit sizes range from 1.0mm to 10mm.

The pouch is made from rugged, abrasion-resistant fabric and features a mesh pocket on the interior lid, and elastic loops on the interior base. The pouch has a double slider zipper closure. The rear of the pouch features Velcro Hook and two MOLLE straps with snaps to provide a variety of attachment options.

- 1x Hand Drill
- 1x Drill Bit Set (HSS)
- Internal Pouch 14

Dimensions (L x W x H)	90mm x 360mm x 75mm	3.5" x 14" x 3"
Weight	1.40kg	3.09lb

CORDLESS POWER TOOL MODULE



P/N 8005337

The Cordless Power Tool Module provides a suite of high-powered battery operated tools and ancillaries ideal for use in confined spaces where there is the need to gain rapid and repeated access over a wide variety of materials including masonry, wood and steel.

A 20V cordless 3-speed hammer-drill delivers 3 speed variations allowing users to choose the level of performance needed for various applications. Powered by a high-performance motor and bits are secured by a heavy-duty 1/2" ratcheting chuck.

A 20V cordless Reciprocating Saw with variable speed trigger control with rubber handle, the saw also incorporates a comfort grip handle. For sawing applications and tasks.

The Reciprocating Saw is supplied with a 6-piece reciprocating saw blade set features 3 blades for wood, and 3 for metal in varying teeth-per-inch. Each blade measures 15.24cm long and 1.3mm thick.

A 20V 6500 rpm cordless grinder with a D-handle, includes a spanner wrench, Type 1 cutting guard and a 2-position side handle.

The grinder is also supplied with a 115mm x 1.2mm x 22.23mm (4 1/2" x 3/64" x 7/8") Zipcut Cutting Wheel for use on steel.

Three (3) DCB205™ 20V XR® 5AH rechargeable Lithium Ion batteries which provide immediate feedback on state of charge with the 3-LED Fuel Gauge System and has a lightweight design for easy transporting. Li-ion batteries benefit from no memory and virtually no self-discharge for maximum productivity.

Each battery weighs approximately 0.635kg.

Three (3) Dewalt DCB115 Wall Mount Charger, each accepts a single Lithium Ion 12-20V battery. The supplied charger lead is terminated with a US style plug and requires 120V AC.

Drill Accessory Kit includes a variety of more than 75 bits, drivers, sockets, and spade bits, supplied in a convenient carry case.

The pouches are made from rugged, abrasion-resistant fabric and features a mesh pocket on the interior lid, and elastic loops on the interior base. The pouches have a double slider zipper closure. The rear of the pouches features Velcro Hook and two MOLLE straps with snaps to provide a variety of attachment options.

The BombTec™ Small Duffel Bag is made from rugged, abrasion-resistant fabric, and features a double zipper opening with a Velcro extension flap to ensure secure closure and two durable handles. The underside features a rubber panel for protection and grip. The sides of the bag feature hard plastic sheets that provide rigidity to the bag.

- 1x Cordless Drill
- 1x Cordless Reciprocating Saw
- 1x Cordless Angle Grinder
- 3x Power Tool Battery Module; Each containing:
 - 1x Power Tool Battery
 - 1x Charging Station
 - Internal Pouch 22
- 6pc Reciprocating Saw Blades Set
- 1x Cutting Wheel
- 1x Drill Accessory Kit
- Internal Pouch 12
- Small Duffel Bag

Dimensions (L x W x H)

559mm x 241mm x 279mm

22" x 9.5" x 11"

Weight

13.56kg

29.9lb

CORDLESS DRILL MODULE



P/N 8005339

The Cordless Drill Module provides a high-powered battery operated drill and drill bits ideal for use in confined spaces where there is the need to gain rapid and repeated access over a wide variety of materials including masonry, wood and steel.

One (1) DCB205™ 20V XR® 5AH rechargeable Lithium Ion battery which provides immediate feedback on state of charge with the 3-LED Fuel Gauge System and has a lightweight design for easy transporting. The Li-ion battery benefits from no memory and virtually no self-discharge for maximum productivity.

The battery weighs approximately 0.635kg (1.39lb).

Drill Accessory Kit includes a variety of more than 75 bits, drivers, sockets, and spade bits, supplied in a convenient carry case.

The Dewalt DCB115 Wall Mount Charger accepts a single Lithium Ion 12-20V battery. The supplied charger lead is terminated with a US style plug and requires 120V AC.

The Internal Pouch 22 is made from rugged, abrasion-resistant fabric and features a mesh pocket on the interior lid, and elastic loops on the interior base. The pouch has a double slider zipper closure. The rear of the pouch features Velcro Hook and two MOLLE straps with snaps to provide a variety of attachment options.

The Reel Bag is a robust protective bag, fitted with a clear plastic viewing window to give the operator an instant view of the contents without having to open the bag. It also has a pair of external pockets. This bag can be used as a carry bag to bring tools downrange.

- 1x Cordless Drill
- 1x Power Tool Battery Module:
 - 1x Power Tool Battery
 - 1x Charging Station
 - Internal Pouch 22
- 1x Drill Accessory Kit
- Reel Bag

Dimensions (L x W x H)	300mm x 190mm x 360mm	11.8" x 7.5" x 14.2"
Weight	6.30kg	13.89lb

IMPACT DRIVER MODULE



P/N 8004492

The Impact Driver Module provides a high-powered battery operated driver and drill bits ideal for use in confined spaces where there is the need to gain rapid access.

Dewalt DCR885B 20V Cordless Impact Driver powered by a Lithium Ion rechargeable battery. The Driver features an 0-3200 bpm, 1400in-lb Torque with variable speed control.

Socket Adapter for the Impact Driver - The socket adapter attaches to the Impact Driver's quick-release chuck and is used to attach the deep impact sockets. The shank is a male 1/4" drive with a 3/8" male drive output. It is made of alloy steel and measures 65mm (2 35/64") long.

The Dewalt DCB115 Wall Mount Charger accepts a single Lithium Ion 12-20V battery. The supplied charger lead is terminated with a US style plug and requires 120V AC.

The module is supplied with a single Dewalt DCB115 Wall Mount Charger accepts a single Lithium Ion 12-20V battery and charges a battery in 90 minutes (or less depending on condition).

The 3/8" Deep Socket Set features a range of over 20 metric and imperial multi-point steel sockets made for rugged use with an impact driver. Note: The socket adapter and socket set are delivered in an Internal Pouch 12.

The pouches are made from rugged, abrasion-resistant fabric and features a mesh pocket on the interior lid, and elastic loops on the interior base. They each have a double slider zipper closure. The rear of each pouch features Velcro Hook and two MOLLE straps with snaps to provide a variety of attachment options.

Pouch 53 also features a removable adjustable shoulder strap allows the pouch to be used as a separate carrier. The rear side seams have an open-end zipper to facilitate attachment to additional 50 series pouches to form a larger pack.

- 1x Cordless Impact Driver
- 1x Power Tool Battery Module:
 - 1x Power Tool Battery
 - 1x Charging Station
 - Internal Pouch 22
- 1x 3/8" Square Drive Deep Socket Set
- 1x Socket Adapter for Impact Driver
- Internal Pouch 12
- External Pouch 53

Dimensions (L x W x H)	450mm x 200mm x 75mm	17.7" x 7.9" x 3"
Weight	4.95kg	10.91lb

POWER TOOL BATTERY MODULE



P/N 8004491

This module provides two power tool batteries and the appropriate charging station.

One DCB205™ 20V XR® 5AH rechargeable Lithium Ion battery which provide immediate feedback on state of charge with the 3-LED Fuel Gauge System and has a lightweight design for easy transporting. Li-ion batteries benefit from no memory and virtually no self-discharge for maximum productivity.

The battery weighs approximately 0.635kg

The Dewalt DCB115 Wall Mount Charger accepts a single Lithium Ion 12-20V battery. The supplied charger lead is terminated with a US style plug and requires 120V AC.

The pouch is made from rugged, abrasion-resistant fabric and features a mesh pocket on the interior lid, and elastic loops on the interior base. The pouch has a double slider zipper closure. The rear of the pouch features Velcro Hook and two MOLLE straps with snaps to provide a variety of attachment options.

- 1x Power Tool Battery
- 1x Charging Station
- Internal Pouch 22

Dimensions (L x W x H)	180mm x 180mm x 75mm	7" x 7" x 3"
Weight	1.30kg	2.87lb

CORDLESS ROTARY TOOL MODULE



P/N 8005333

This module provides a hand-held tool where its smooth-running and broad range of accessories provide delicate precision, guard against excessive vibration, and is also ideal for use in confined spaces.

- 1x Cordless Dremel
- Internal Pouch 12

The 12V Cordless Rotary Dremel has a speed range of 5,000 to 35,000 rpm and has a separate on/off switch and speed control retains speed setting for the perfect speed every time, EZ Twist nose cap with wrench for fast accessory changes, cool-running ball bearing construction for smooth and quiet operation, comfort grip housing for easier handling and better control.

Battery: Lithium Ion 12V rechargeable
 Charge time: 3 hours
 Power: 110V AC
 USB Compatible

The pouch is made from rugged, abrasion-resistant fabric and features a mesh pocket on the interior lid, and elastic loops on the interior base. The pouch has a double slider zipper closure. The rear of the pouch features Velcro Hook and two MOLLE straps with snaps to provide a variety of attachment options.

Dimensions (L x W x H)	90mm x 180mm x 75mm	3.5" x 7" x 3"
Weight	0.80kg	1.76lb

POWER CORD MODULE



P/N 8005300

This module provides the operator a means to provide AC power for multiple corded electrical tools at the task location.

This 110 Volt Extension 50ft (15.2m) 12 gauge, 3-strand wire cord provides portable power with six (6) outlets. The extension cord is secured on a heavy duty, standalone reel for ease of deployment and features a lighted reset/off switch and is rated at 1875 maximum watt. The reel's power supply is a 3-prong grounded system with built in circuit-breaker. The cord, reel, and stand are all cold weather flexible to -40°C (-40°F).

The power cord module is supplied in a robust protective Reel Bag which has a clear plastic viewing window, and a pair of external pockets. Additional this bag can be used as a carry bag to bring tools downrange.

- 1x 110V Extension Cord Module
- Reel Bag

Notes:

- This product is only compatible with 110V A and B type plugs and outlets.
- This product is only rated for use with 110V AC.
- Optional equipment includes an International Wall Plug Adapter and a 220v - 110v converter. Sold separately.

Dimensions (L x W x H)	394mm x 330mm x 197mm	15.5" x 13" x 7.75"
Weight	7.20kg	15.87lb

ENTRY TOOL MODULE



P/N 8004486

This module provides a set of full-size tools to enable the operator to forcibly gain entry and pry items. It also includes tools to shut off natural gas valves and open fire hydrants.

A double faced 8lb Sledge Hammer, 32 inches in length with a non-slip safety grip. The Head is drop forged and tempered steel mounted on a varnished premium hickory handle.

The 30inch Utility Bar constructed in one-piece forged steel for durability and with a heat-treated and tempered striking face preventing chipping. The grips are heat-resistant, durable and lightweight, they feature high-visibility 3M™ Scotchlite™ inlays for enhanced visibility.

The gloves are heavy-duty rigger work gloves made with durable split-grain cowhide leather providing excellent levels of mechanical protection, including protection against abrasion injuries; blisters; contact with dirt; grazes; lacerations & scratches.

The Tool Roll is made from rugged, abrasion-resistant fabric and is designed to carry large and oddly shaped items with a drop-down extension for bulky tool heads. The Tool Roll features an adjustable shoulder strap, and three (3) side release buckles to hold the roll closed. Inside, deep pockets with elastic webbing provide easy access to tools, and Velcro loops help to hold them in place. There is a strip of Velcro loop for attachment of a pouch. Velcro strips along the sides allow attachment of multiple tool rolls in tandem to form a larger roll.

Tool Roll Dropdown Extension is made from rugged, abrasion-resistant fabric, and features webbing straps that attach to the Tool Roll Long so that it hangs below to form a seat for tool heads that are too large to fit inside the roll.

- 1x 8lb Sledge
- 1x 30" Utility Bar
- 1 pair x Gloves Heavy Duty
- Tool Roll Long
- Tool Roll, Dropdown Extension

Dimensions (L x W x H)	1000mm x 150mm x 125mm	40" x 6" x 5"
Weight	9.90kg	21.82lb

COMPACT ENTRY TOOL MODULE



P/N 8004494

The components in this module enables the operator to force entry to gain access to buildings. The compact nature of these tools fulfills a tactical niche where space and weight combined with capability are essential.

- 1x 15" Utility Bar
- 1x Forcible Entry Tool
- External Pouch 52

The 15" Utility Bar is a multi-functional tool for both demolition and access applications, it features adjustable jaws for straightening, pully and prying; it features a crowbar end, nail extractor and striking head. It has extendable jaws have an opening of up to 5.5in (140mm) or increase the access and force of the nail extractor.

Overall dimensions: 137mm (5 13/32") W x 406mm (16.0") L; weight: 1.67kg (3.68lb).

The Forcible Entry Tool is a personal size multi-purpose forcible entry and rescue tool, designed for forcing doors and windows open, prying and twisting hasps and locks, light overhauling, nail removal, gas shutoff, metal cutting and chopping. This Entry Tool complies with SAE International Aerospace Standard AS5402 and NTSB Crash Axe requirements.

Overall dimensions: 164mm (6.47") W x 380mm (15.0") L x 22mm (0.86") T; weight: 1.5kg (3.3lb).

The pouch is made from rugged, abrasion-resistant fabric, and features mesh pockets on the interior lid, and elastic loops on interior rear, which is lined with Hook and Loop for attachment of smaller pouches. The pouch has a double slider zipper closure. The rear of the pouch features MOLLE straps with snaps for attachment to a carrier. A removable adjustable shoulder strap allows the pouch to be used as a separate carrier. The rear side seams have an open-end zipper to facilitate attachment to additional 50 series pouches to form a larger pack.

Dimensions (L x W x H)	450mm x 120mm x 75mm	17.7" x 4.7" x 3"
Weight	3.70kg	8.15lb

EXCAVATION MODULE



P/N 8004487

This module provides full-sized excavation tools which can be used to gain access, excavate a given area, use to move material from one location to the next, to clear up a given area, etc.

The Shovel is a tool used to dig as well as to move loose, granular materials like dirt, gravel, gain or snow from one spot to another.

The Pick Axe is a T-shaped hand tool typically used for prying. It is pointed at one end with a broad flat “axe” blade at the over. A gradual curve characteristically spans the length of the head. The pointed end is used for breaking and prying where the axe for hoeing, skimming and chopping through roots.

The gloves are heavy-duty rigger work gloves made with durable split-grain cowhide leather providing excellent levels of mechanical protection, including protection against abrasion injuries; blisters; contact with dirt; grazes; lacerations & scratches.

The Tool Roll is made from rugged, abrasion-resistant fabric and is designed to carry large and oddly shaped items with a drop-down extension for bulky tool heads. The Tool Roll features an adjustable shoulder strap, and three (3) side release buckles to hold the roll closed. Inside, deep pockets with elastic webbing provide easy access to tools, and Velcro loops help to hold them in place. There is a strip of Velcro loop for attachment of a pouch. Velcro strips along the sides allow attachment of multiple tool rolls in tandem to form a larger roll.

Tool Roll Dropdown Extension is made from rugged, abrasion-resistant fabric, and features webbing straps that attach to the Tool Roll Long so that it hangs below to form a seat for tool heads that are too large to fit inside the roll.

- 1x Short Handled Shovel
- 1x Pick Axe
- 1 pair x Gloves Heavy Duty
- Tool Roll Long
- Tool Roll, Dropdown Extension

Dimensions (L x W x H)	1150mm x 250mm x 100mm	46" x 10" x 4"
Weight	6.80kg	14.99lb

LIGHT EXCAVATION MODULE



P/N 8004488

This lighter smaller module provides smaller excavation tools which are ideal where space is limited, or perhaps a reduced payload is essential. This wide combination of tools help gain access as well as excavate, their size and application may benefit discretion.

The Keyhole Hacksaw cuts metal or wood and is provided with a 24 point blade which is 191mm (7 1/2") in length and is mounted on a black trigger style pistol grip handle.

The Survival Saw can be used for escape and evasion. The tightly woven (8 wire) stainless steel saw offers increased life-span and reduced weight. It will cut wood, plastic, bone and can be made into a bow saw. It is terminated with two metal ring handles, one larger than the other.

The bypass Secateurs have fully hardened steel blades with a titanium coating and contoured rolling handle which is fitted with an easy-open lock to protect the blade during transport and storage.

The 2lb Sledge Hammer has a drop forged and tempered steel head paired with a hickory handle 280mm (11") in length.

The Garden Tool Set is a 3pc plastic set of tools and includes a hand trowel, hand transplanter and hand cultivator for all gardening needs. There is a convenient hole at the end of the handle for hanging.

The Hand Trowel has a short, tempered steel blade 140mm (5 1/2") in length

The folding Entrenching Tool provides a compact shovel constructed in steel using a tempered steel blade with teeth cut into it for cutting and slashing. The Entrenching Tool features a triangular handle which is strong and fits the hand well.

The External Pouch 33 is made from rugged, abrasion-resistant fabric, and features a pass-through sleeve on the interior lid. The interior base has ample room and features a drawstring closure. Side closure zippers can be opened to allow the pouch depth to expand from 64mm (2.5") to 127mm (5") in order to accommodate larger product if required. The rear of the pouch features four MOLLE straps with snaps to provide a variety of attachment options, and the pouch is secured with two side release buckles.

- 1x Keyhole Hacksaw Set
- 1x Survival Saw
- 1x Secateurs
- 1x 2lb Sledge
- 1x Garden Tool Set, 3pc Plastic
- 1x Trowel Hand, small
- 1x Entrenching Tool
- External Pouch 33

Dimensions (L x W x H)	279mm x 127mm x 254mm	11" x 5" x 10"
Weight	4.25kg	9.37lb

VEGETATION CUTTING MODULE



P/N 8004489

This module provides full-sized vegetation cutting tools which can be used to gain access, clearing a route, clearing an area for enhanced investigation, to clear up a given area, etc.

The bypass Secateurs have fully hardened steel blades with a titanium coating and contoured rolling handle which is fitted with an easy-open lock to protect the blade during transport and storage.

These super-light Bypass Lopping Shears are made with high carbon steel. The lightweight aluminium handles feature a shock-absorbing rubber bumper and non-slip comfort grips.

The Hedge Shear 24" feature a top-grade high carbon steel blade and the shears features a tension knob. The handles feature a contoured non-slip comfort grip.

The Tool Roll (long) is made from rugged, abrasion-resistant fabric, and is designed to carry large and oddly shaped items. It features an adjustable shoulder strap, and three (3) side release buckles to hold the roll closed. Inside, deep pockets with elastic webbing provide easy access to tools, and Velcro loops help to hold them in place. There is a strip of Velcro loop for attachment of a pouch. Velcro strips along the sides allow attachment of multiple tool rolls in tandem to form a larger roll.

The two Tool Rolls have been attached to form a larger carrier to accommodate the tools in this module.

- 1x Secateurs
- 1x Shear Lopping Bypass
- 1x Shear Hedge 24"
- 2x Tool Roll Long

Dimensions (L x W x H):	900mm x 350mm x 100mm	35" x 14" x 4"
Weight:	5.40kg	11.90lb

MANUAL WOOD CUTTING MODULE



P/N 8004485

The module provides full-sized tools for cutting through wood whether to gain access or to clear a given area.

The Hand File has a Bastard Cut Type, American tooth pattern of 254mm (10”) length, which is primarily supplied to assist with sharpening of the Felling Axe.

A heavy-duty Bow Saw for demanding occasions, high-quality steel construction with a high impact enamel coating for rust protection. Features an ergonomic handle with knuckle protector for comfort and safety. Supplied with a 21” dry cutting blade.

The general-purpose Wood Saw features a 22” steel blade with filed hard point teeth and a soft touch rubber grip handle.

The Felling Axe is specifically designed for felling trees and chopping logs of wood. The head of the felling axe weighs just under 2lb and sits at the end of a long handle.

The gloves are heavy-duty rigger work gloves made with durable split-grain cowhide leather providing excellent levels of mechanical protection, including protection against abrasion injuries; blisters; contact with dirt; grazes; lacerations & scratches.

The Tool Roll (long) is made from rugged, abrasion-resistant fabric, and is designed to carry large and oddly shaped items. It features an adjustable shoulder strap, and three (3) side release buckles to hold the roll closed. Inside, deep pockets with elastic webbing provide easy access to tools, and Velcro loops help to hold them in place. There is a strip of Velcro loop for attachment of a pouch. Velcro strips along the sides allow attachment of multiple tool rolls in tandem to form a larger roll.

The two Tool Rolls have been attached to form a larger carrier to accommodate the tools in this module.

- 1x Bow Saw
- 1x Wood Saw
- 1x Felling Axe
- 1x 1pc File #1 (w/handle)
- 1x Gloves Heavy Duty
- 2x Tool Roll Long

Dimensions (L x W x H)	900mm x 250mm x 100mm	35” x 10” x 4”
Weight	6.00kg	13.22lb

SCREWDRIVER MODULE



P/N 8005290

The screwdriver module provides the operator the means to remove fasteners to gain access.

This 10-piece Screwdriver Set is ideal for a multitude of fastening applications. It includes 10 of the most popular sizes and the handles are colour coded to easily locate the right tool. For ease of rapid tip identification, the red handles are associated with standard tips and the blue handles are Phillips tips. Each tool has an ergonomically designed handle with slip-resistant textured grip for comfortable hold. The heat-treated alloy steel bars are highly durable, and the nickel-plated bar resists corrosion.

The set includes multiple types of screwdriver: cabinet, Phillips, standard, standard stubby and stubby Phillips.

The pouch is made from rugged, abrasion-resistant fabric and features a mesh pocket on the interior lid, and elastic loops on the interior base. The pouch has a double slider zipper closure. The rear of the pouch features Velcro Hook and two MOLLE straps with snaps to provide a variety of attachment options.

- 1x Standard Screwdriver Set
- Internal Pouch 14

Dimensions (L x W x H):	90mm x 360mm x 75mm	3.5" x 14" x 3"
Weight:	0.70kg	1.54lb

BASIC HAND TOOLS MODULE



P/N 8004474

The Basic Hand Tools Module provides the operator with fundamental tools for fastening, cutting, measuring and prying.

Multi-Driver- This square drive ratcheting Multi-Bit Driver features 3-1/2" interchangeable power groove bits that are power tool compatible giving you maximum versatility. An all-metal ratchet gives you 2X faster driving in high-torque applications without sacrificing durability or control. The multi-bit screwdriver also has wrench-ready hex shanks providing additional leverage. The interchangeable bits are precision machined and chrome-plated, providing marine-grade rust protection and reduced wear. The screwdriver features magnetic bit retention providing consistent driving performance.

Keyhole Hacksaw - This 11" (279mm) keyhole hacksaw is used to cut openings in sheet metal, wood, or laminated materials. The sturdy pressure-cast handle ensures firm grip, good control and all-day comfort. Additionally, the durable finish on the cutting blade resists corrosion and grime. Four (4) replacement blades are included (2 for metal, and 2 for wood), and easy to swap out when required.

Claw Hammer - This 16oz claw hammer features a contoured fiberglass handle for increased comfort, a solid fiberglass core, and is factory balanced for maximum striking power.

Adjustable Wrench - This 6" (152mm) adjustable wrench features a large knurl for easy adjustment and a tight jaw fit. Its hex jaw design helps reduce slippage and tightly grips the fastener for solid, secure operation, while the corrosion-resistant chrome finish helps prevent rusting. A wide handle design provides comfort and reduces fatigue during extended use.

Measuring Tape 5m (16') - This measuring tape has coating on the first 100mm reduces the risk of breaking the tape by 95%, and provides a standout of 3.35 mm for easy one person measuring. The coated blade is up to 10 times more resistant to abrasion than normal lacquered blades, and a 3-rivet specially designed end hook makes this tape stronger. The wide blade makes reading numbers easy, and a cushion grip provides sturdy, slip-resistant hold.

Pry Bar- The pry bar is constructed from forged carbon steel which provides durability and strength. The bar is ideal for removing nails, lifting and prying objects. Bevelled cutting edges and nail slots for quality performance, and an extended tongue improves grip and reach in hard-to-get-at places.

External Pouch 52 - This pouch is made from rugged, abrasion-resistant fabric, and features mesh pockets on the interior lid, and elastic loops on interior rear, which is lined with Velcro Loop for attachment of smaller pouches. The pouch has a double slider zipper closure. The rear of the pouch features MOLLE straps with snaps for attachment to a carrier.

A removable adjustable shoulder strap allows the pouch to be used as a separate carrier. The rear side seams have an open-end zipper to facilitate attachment to additional 50 series pouches to form a larger pack.

- 1x Multi-driver
- 1x Keyhole Hacksaw
- 1x Claw Hammer
- 1x Adjustable Wrench 6"
- 1x Tape Measure 8m (Metal)
- 1x Pry Bar
- External Pouch 52

Dimensions (L x W x H)

450mm x 120mm x 75mm

17.7" x 4.7" x 3"

Weight

3.50kg

7.71lb

STANDARD WRENCH MODULE



P/N 8004475

The Standard Wrench Module provides the operator the ability to grip, fasten, turn, tighten and loosen various items, like pipes, pipe fittings, nuts and bolts.

11 pc SAE Combination Set - This 11 piece metric wrench set is manufactured from high-strength steel, and features a 12 point box end for exact fit, thin-walled construction for ease of use in tight spots, and is heat treated for consistent hardness. Sizes range from 1/4" to 7/8".

11pc Metric Combination Set - This 11 piece metric wrench set is manufactured from high-strength steel, and features a 12 point box end for exact fit, thin-walled construction for ease of use in tight spots, and is heat treated for consistent hardness. Sizes range from 7mm to 19mm.

Tool Roll Small x2 - These pouches are made from rugged, abrasion-resistant fabric, and features twelve (12) tool slots on the inside. The Tool Roll is secured using two (2) Velcro tabs. Once rolled, the two Tool Rolls are inserted into the Pouch 14.

A 5cm (2") piece of green Velcro is attached to the exterior of one of the Small Tool Rolls to aide in differentiating the Metric from the SAE wrench sets.

The pouch is made from rugged, abrasion-resistant fabric, and features mesh pockets on the interior lid, and elastic loops on interior base. The pouch has a double slider zipper closure. The rear of the pouch features Velcro Hook and two MOLLE straps with snaps to provide a variety of attachment options.

- 11pc Metric Combination Set
- 11pc SAE Combination Set
- Internal Pouch 14
- 2x Tool Roll, Small

Dimensions (L x W x H):	90mm x 360mm x 75mm	3.5" x 14" x 3"
Weight:	2.60kg	5.73lb

FOLDING HEX KEY MODULE



P/N 8004477

The Folding Hex Key Module provides the operator the ability to drive bolts and screws with hexagonal sockets in their heads.

A conveniently stored full set of Allen keys. This module contains both metric and imperial measurements.

9 pc Imperial Folding Hex Key Set - This 8-piece imperial folding hex key set is manufactured from alloy steel, and heat treated for optimum strength. This ergonomic set has a hard-plastic shell, with a soft plastic cover for comfort, slip resistance and safety. Colour coded red for imperial; it also features fold out keys for maximum leverage. Sizes include: 5/64"-1/4"

8 pc Metric Folding Hex Key Set - This 8-piece imperial folding hex key set is manufactured from alloy steel, and heat treated for optimum strength. This ergonomic set has a hard-plastic shell, with a soft plastic cover for comfort, slip resistance and safety. Colour coded blue for metric, it also features fold out keys for maximum leverage. Sizes include: 2mm - 8mm.

The Internal Pouch 11 is made from rugged, abrasion-resistant fabric, and features a mesh pocket on the interior lid, and elastic loops on the interior base. The pouch has a double slider zipper closure. The rear of the pouch features Velcro Hook and two MOLLE straps with snaps to provide a variety of attachment options.

- Metric Folding Set
- Imperial Folding Set
- Internal Pouch 11

Dimensions (L x W x H):	125mm x 100mm x 75mm	5" x 4" x 3"
Weight:	0.70kg	1.54lb

HEX KEY MODULE



P/N 8004886

The standard L-shaped Allen key offers versatile reach into tight spots while also allowing leverage when needed. This module contains both metric and imperial measurements.

- Hex Key Combo Module
- Internal Pouch 12

The Internal Pouch 12 is made from rugged, abrasion-resistant fabric and features a mesh pocket on the interior lid, and elastic loops on the interior base. The pouch has a double slider zipper closure. The rear of the pouch features Velcro Hook and two MOLLE straps with snaps to provide a variety of attachment options.

Dimensions (L x W x H):	90mm x 180mm x 75mm	3.5" x 7" x 3"
Weight:	0.90kg	1.98lb

PLIER MODULE



P/N 8004891

This plier module provides the means for an Operator to cut, twist, bend wires, cable and small metalwork components.

This 3-piece set of assorted cutting pliers are manufactured from Chromium-vanadium steel for strength and durability. They feature double-composite material handles for better grip, precision-engineered jaws, and induction heat-treated cutting edges for increased durability.

The set includes:

- 7" (179mm) linesman,
- 6" (152mm) long-nose
- 6" (152mm) diagonal cutting pliers

The Internal Pouch 12 is made from rugged, abrasion-resistant fabric and features a mesh pocket on the interior lid, and elastic loops on the interior base. The pouch has a double slider zipper closure. The rear of the pouch features Velcro Hook and two MOLLE straps with snaps to provide a variety of attachment options.

- 3pc Plier Module
- Internal Pouch 12

Dimensions (L x W x H):	90mm x 180mm x 75mm	3.5" x 7" x 3"
Weight:	0.80kg	1.76lb

MINI PLIER MODULE



P/N 8004892

The mini plier module provides the operator the means to cut wires, grasp and bend various items.

The Mini Pliers Set is designed for grasping, bending, and cutting. The pliers are made of drop forged steel with an oil resistant non-slip grip that provides durability and comfort.

The set includes:

- Diagonal plier
- End cutting plier
- Bent nose plier
- Long nose plier
- Flat nose plier
- Groove joint plier

- 6pc Mini-Plier Set
- Internal Pouch 11

The Internal Pouch 11 is made from rugged, abrasion-resistant fabric and features a mesh pocket on the interior lid, and elastic loops on the interior base. The pouch has a double slider zipper closure. The rear of the pouch features Velcro Hook and two MOLLE straps with snaps to provide a variety of attachment options.

Dimensions (L x W x H):	125mm x 100mm x 75mm	5" x 4" x 3"
Weight:	0.70kg	1.54lb

CHISEL MODULE



P/N 8005289

This module provides the operator the capability of dressing, shaping, or removing material from wood or metal objects. This 3-piece Chisel Set is manufactured from chrome vanadium steel and features a soft rubber grip handle.

- 3pc Chisel Set
- Internal Pouch 14

The set includes:

- 13mm (1" x 1/2") chisel
- 19mm (1" x 3/4") chisel
- 25mm (1" x 1") chisel

The Internal Pouch 14 is made from rugged, abrasion-resistant fabric and features a mesh pocket on the interior lid, and elastic loops on the interior base. The pouch has a double slider zipper closure. The rear of the pouch features Velcro Hook and two MOLLE straps with snaps to provide a variety of attachment options.

Dimensions (L x W x H):	90mm x 360mm x 75mm	3.5" x 14" x 3"
Weight:	0.70kg	1.54lb

PRECISION TOOLS MODULE



P/N 8004479

Tweezer set not shown.

The Precision Tools Module provides the operator with variety of smaller tools for accurate work in narrow spaces.

Essential set of tools supplied in a convenient pouch allowing you to be precise when working on something nasty.

6 pc Precision Screwdriver Set - This set includes six (6) of the most popular slotted and Phillips® screwdrivers and is perfect for many fastening applications. Tough plastic swivel-head handles provide comfort, reach, and precision. The set includes: 1.4mm Standard, 2.0mm Standard, 2.4mm Standard, 3.0mm Standard, 0pt Phillips®, 1pt Phillips®.

6 pc Mini Plier Set – The Mini Plier Set is designed for grasping, bending, and cutting. The pliers are made of drop forged steel with an oil resistant non-slip grip that provides durability and comfort. The set includes: diagonal pliers, end cutting pliers, bent nose pliers, long nose pliers, flat nose pliers and groove joint pliers.

6 pc Needle File Set - This set includes six miniature files with fine cut for intricate work. Contains 1 each of: equalling, half round, flat, round, square, and three square.

X-Acto Knife - Precision knife with pen type contoured handle and quick-spin blade change. Package includes 5 spare blades.

4pc Tweezer Set – The Tweezer Set is a complete basic stainless-steel tweezer set providing a refined way to sample and grasp smaller delicate items. The set includes: pointed tweezer; stamp tweezer; retrieving forceps; and solder/utility tweezer.

Hook and Pick Set - The four-piece hook & Pick set features an all-metal core for up to 50% more durability. Chrome-plated shanks reduce corrosion on the hooks and picks while providing superior rust protection. A comfort grip handle and precision knurling give you increased tool control and comfort. The kit features a straight pick, offset hook, O-ring hook, and 90° right angle hook providing versatility for a variety of uses.

Hemostats (small)- The 3.5" (89mm) hemostats lock in place by clamping the interlocking teeth together. They are constructed of stainless steel and provide a vice-type grip when locked.

Tack Lifter- This sturdy tack puller makes short work of removing tacks, brads, staples and more. The tack lifter features a tough V-slot steel tip, rugged and ergonomic handle, and rust-resistant 4-inch shank.

Centre Punch Set - The centre punch, set comes in various sizes and is used to mark the centre of a hole prior to drilling. This punch set consists of 6 punches, 152mm (6") long. They are made of hard steel and the sizes include: 1/16", 1/8", 5/32", 3/16", 1/4" and 5/16".

Mini Flashlight - The mini flashlight is lightweight, and easy to handle at 4.45" (113mm) and comes equipped with an advanced focused system which allows the user to quickly and seamlessly go from a broad up-close floodlight to a sharply focused long-distance beam. The mini flashlight has a 140-lumen output with a beam distance of up to almost 400 feet and requires only a single AA battery to power up.

Dental Mirror - An inspection mirror for tough to reach spaces; made of durable plastic with a comfort grip. Mirror dimensions 5.7" (146mm) x 1" (24mm).

The Internal Pouch 12 is made from rugged, abrasion-resistant fabric and features a mesh pockets on the interior lid, and elastic loops on the interior base. The pouch has a double slider zipper closure. The rear of the pouch features Velcro Hook and two MOLLE straps with snaps to provide a variety of attachment options.

- 1x 6pc Precision Screwdriver Set
- 1x 6pc Mini Plier Module
- 1x 6pc Needle File Set
- 1x X-Acto Knife
- 1x 4pc Tweezer Set (Not shown in photo above)
- 1x Hook and Pick Set
- 1x Hemostats Steel Small
- 1x Lifter Tack
- 1x Centre Punch Set
- 1x Mini Flashlight
- 1x Dental Mirror
- Internal Pouch 12

Dimensions (L x W x H):	90mm x 180mm x 75mm	3.5" x 7" x 3"
Weight:	1.70kg	3.75lb

MINI COMBINATION TOOL MODULE



P/N 8005291

This module provides the operator the capability of removing various fasteners enabling access

- 39pc Ratcheting Set
- Internal Pouch 12

This 39-Piece Ratcheting Set includes: ratchet, bits, sockets and holder in a minimum of space. The set includes the following:

- Ratchet Handle 1/4"x87 mm
- Screwdriver Handle 1/4"x78 mm
- Bit Quick Connector 1/4"x50 mm
- Driver Connector 1/4"x25 mm
- 23mm Sockets 5.5, 6, 7, 8, 10, 12, 13mm
- Screwdriver Tips:
 - Phillips #1, 2, 3
 - Posi # 1, 2, 3
 - Torx #10, 15, 20, 25, 30, 40
 - Torx BO # 10, 15, 20, 25, 30
 - Hex # 3, 4, 5, 6, 8

This combination tool set is ideal as a universal companion for a variety of applications. The high quality bit holder has a comfort grip handle for ergonomic work. The mini ratchet is used for rapid working when fastening jobs with a power tool or conventional hand tools are not feasible due to insufficient space. Easy to use and change from left to right direction and vice versa by using the switch over lever. The direct bit take-up in the ratchet head makes for a mini tool design and is ideal for low working heights. The small return angle of 6° allows for precise work. Robust drop-forged, full steel design, torque of over 65 Nm, and a rapid adaptor bit holder with free-turning sleeves ensure durability combined with ease of use for fastening or loosening most standard hardware. The bits and sockets can be used for both manual and power tool operations for almost all applications. Tools have colour coding according to size for quick and easy access.

The pouch is made from rugged, abrasion-resistant fabric and features a mesh pocket on the interior lid, and elastic loops on the interior base. The pouch has a double slider zipper closure. The rear of the pouch features Velcro Hook and two MOLLE straps with snaps to provide a variety of attachment options.

Dimensions (L x W x H):	90mm x 180mm x 75mm	3.5" x 7" x 3"
Weight:	0.70kg	1.54lb

STRIPPED FASTENER MODULE



P/N 8005331

This specialty module is designed to provide the user with a number of options to remove damaged rounded or stripped fasteners.

Bolt Grip 5-piece Expansion Set removes damaged, rounded over, painted over and rusted over nuts and bolts. The set can be used on both metric and imperial sized nuts and can be used with a 3/8" socket drive, an open-ended wrench, Vice Grip or Impact Gun.

The 5-piece Screw Extractor Set is designed to remove broken studs, bolts, socket screws and fittings. Aggressive left-hand spiral design for extra gripping power. Spiral flutes are designed to embed themselves deeper into the metal as you turn the tool, so as the fastener resistance increases, the extractor's grip increases.

The internal pouch is made from rugged, abrasion-resistant fabric. The pouch has a double slider zipper closure. The rear of the pouch features Velcro Hook and two MOLLE straps with snaps to provide a variety of attachment options.

- Stripped Nut Remover Set
- 5pc Stripped Screw Extractor Set
- Internal Pouch 10

Dimensions (L x W x H):	100mm x 50mm x 50mm	4" x 2" x 2"
Weight:	0.45kg	0.99lb

NON-CONDUCTIVE TOOLS MODULE



P/N 8004480

This specialty Tool Module provides an essential set of tools for working in environments where it is paramount not to conduct electrical current.

Insulated Screwdriver Set - This 11-piece screwdriver set has a colour coded handle with tip ID for easy selection and comfortable vinyl grip for maximum comfort. The bits have a cold-formed black oxide tip for precise fit, and a Chrome-plated bar for corrosion resistance. The insulated screwdriver set has 4 flat tip and 4 Phillips screwdrivers in the following sizes: PH0, PH1, PH2, S1, S2, 3mm (1/8”), 6mm (1/4”) and 5mm (3/16”).

The soft grip 8” Strap Wrench provides a flexible non-conductive wrench for loosening pipe joints, large nuts and hand-sized (110mm approx.) fabrications.

The lightweight Ceramic Pocket Knife features a 2.75” blade. The knife has a removable pocket clip and there is a filler block in the handle to prevent objects from hitting the ceramic knife edge when folded. The knife features a mirror finished and razor sharp black (carbonised zirconium di-oxide) ceramic blade.

The Non-Conductive Scissors are mounted on a 304 stainless pivot with an overall length of 125mm (5”) fitted with a pair of ceramic blade inserts. The finger holes are large enough to accommodate a man’s hand. 304 stainless steel for the pivot and tightening screw for a very low magnetic signature.

The Ceramic Tweezer Set comprises of three lightweight ESD safe tweezers which are all non-magnetic.

- Fine Tip – ideal for grabbing, holding, removing, and placing fine delicate parts.
- Curved Tip – ideal for grabbing, holding, removing, and placing fine delicate parts in hard to reach or tight spaces.
- Round Tip – ideal for grabbing holding, removing, and placing fine delicate parts.

This plastic 7 1/2” Hemostats incorporate a ratchet 4 stage locking system and a strengthened point making these forceps ideal for clamping articles.

Plastic Hammer – Compo-Cast Dead Blow Hammer, non-sparking, 18oz head, 11 1/4” overall length, soft face, 1 3/4” face diameter, moulded steel head, 3 3/4” head length, reinforced steel handle.

The Plastic Hand Trowel is ideal for light excavation, it is sturdy and features a comfortable handle complete with a hanging loop. It can be cleaned underwater without risk of corrosion.

This 120” Cloth Ruler is made of fibreglass with vinyl-coating, it is durable and flexible. It can be wrapped around curved objects. The Ruler has metal end caps to prevent fraying and has easy to read black graduations (inches to 8ths on the front and inches to 8ths and cm to mm on the back).

The Plastic Probe 6” is a hardened plastic probe sharpened at one end and can be used to pierce holes into objects for the insertion of optical search equipment.

- Insulated Screwdriver Set
- 1x Strap Wrench 8”
- 1x Ceramic Pocket Knife
- 1x Ceramic Scissors
- 1x 3pc Non-Conductive Tweezer Set
- 1x Hemostats Plastic Long
- 1x Plastic Hammer
- 1x Plastic Shovel
- 1x Cloth Ruler
- 1x Plastic Probe
- Internal Pouch 52

Dimensions (L x W x H)

450mm x 120mm x 75mm

17.7” x 4.7” x 3”

Weight

2.65kg

5.84lb

This pouch is made from rugged, abrasion-resistant fabric, and features mesh pockets on the interior lid, and elastic loops on interior rear, which is lined with Velcro Loop for attachment of smaller pouches. The pouch has a double slider zipper closure. The rear of the pouch features MOLLE straps with snaps for attachment to a carrier.

SOLDER MODULE



P/N 8004481

This module enables the operative to solder or remove solder as his task requires. It is centered around a 3 in 1 micro butane torch.

Butane Torch Multifunction Set

This multi-function torch has an adjustable, precision flame and hassle-free, trigger-start ignition. The pistol-style grip makes it ideal for detailed work on metal, wood, foam and other materials. It also comes packaged with a 3-in-1 versatile tip attachment, including a micro torch, a fine soldering tip and hot blower. This torch is refillable.

Solder

This lead-free solder features a 0.03” flux-core wire with a low melting temperature for a wide variety of soldering applications. It is suitable for use on galvanized or zinc-coated carbon steel plates with thickness of 7.9mm - 12mm. It provides a deep weld with superior strength and presents little slag or splatter, delivering a tensile strength of 605 - 645MPa.

Solder Sucker

This solder extractor provides powerful suction for solder removal for easy one-handed use. It has a durable aluminium housing, and a replaceable anti-static nylon tip.

The Internal Pouch 12 is made from rugged, abrasion-resistant fabric and features a mesh pocket on the interior lid, and elastic loops on the interior base. The pouch has a double slider zipper closure. The rear of the pouch features Velcro Hook and two MOLLE straps with snaps to provide a variety of attachment options.

- 1x Butane Torch Multi-Function Set
- 1x Solder
- 1x Solder Sucker
- Internal Pouch 12

Note: Item is shipped without Butane gas due to restrictions on shipping Dangerous Goods. Butane gas should be readily available from local suppliers.

Dimensions (L x W x H):	90mm x 180mm x 75mm	3.5" x 7" x 3"
Weight:	1.45kg	3.20lb

SPECIALTY CLAMP MODULE



P/N 8004482

This module provides a pair of special clamps which provide high levels of clamping force afforded by these compact hand tools. These locking Clamps are something of a unique tool, being derived from both vices and pliers they can be used for many applications that either clamps or pliers would be used for, as well as numerous other applications that hardly any other tool would be suitable for.

- 1x C Clamp
- 1x Chain Clamp
- Internal Pouch 14

When the optimum setting has been dialed in, the jaws will close together with an audible “click”, and lock in place. Once locked in place, the pliers literally grip material like a vice; to release the jaws, there is a separate lever built into the handle which instantly disengages them when it is pressed.

The C Clamp provides a wide-opening jaws allowing for greater versatility in clamping a variety of shapes. The swivel pads provide a good grip on tapered work, whether clamping, holding, pressing or squeezing. Easy to use by turning a screw to adjust pressure and fit, and it stays adjusted for repetitive use. Constructed of high-grade heat-treated alloy steel for maximum toughness and durability and features a classic trigger release designed to provide maximum locking force.

This Chain Clamp holds and locks around any shape or size, making it Ideal for awkward shaped pieces.

Easy to use by turning the screw to adjust pressure and fit and stays adjusted for repetitive use. Constructed of high-grade heat-treated alloy steel for maximum toughness and durability and features a classic trigger release designed to provide maximum locking force.

The Pouch 14 is made from rugged, abrasion-resistant fabric and features a mesh pocket on the interior lid, and elastic loops on the interior base. The pouch has a double slider zipper closure. The rear of the pouch features Velcro Hook and two MOLLE straps with snaps to provide a variety of attachment options.

Dimensions (L x W x H):	90mm x 360mm x 75mm	3.5" x 14" x 3"
Weight:	1.30kg	2.87lb

ELECTRICAL DIAGNOSTIC MODULE



P/N 8004483

This module provides the operator a set of tools useful for diagnosing electrical circuits.

Insulated Screwdriver Set - This 11-piece insulated screwdriver set has a colour coded handle with tip ID for easy selection and comfortable vinyl grip for maximum comfort. The bits have a cold-formed black oxide tip for precise fit, and a Chrome-plated bar for corrosion resistance. The insulated screwdriver set has 4 flat tip and 4 Phillips screwdrivers in the following sizes: PH0, PH1, PH2, S1, S2, 3mm (1/8”), 6mm (1/4”) and 5mm (3/16”).

Wire Stripper/Crimper Tool is compact, lightweight, and the narrow nose fits into tight places. It is manufactured from hardened steel with precision ground stripping holes and has a spring-loaded action for self-opening. It features easy-to-read wire gauge markings on both sides for stripping wire that is 16 – 26 AWG, in either direction and has shear-type cutting blades for clean cuts. The textured handle provides a firm, comfortable grip.

NCV Tester - This voltage detector with LED is used for multiple applications and can detect between 50 and 1000V AC. The NCV tester has a small integrated light for use in low light conditions. The durable tip allows for easy checking of power outlets and is also designed with a green “Power On” indicator light ensuring the voltage detector is working properly before use.

This module is centered around the GCT-3200 Digital Multimeter which is equipped with an easy to read 3.5-inch backlit LCD digital display and magnetic holding strap making this Multimeter ideal for hands-free applications. In addition, the Multimeter features a rubber housing to promote steadfast comfortable grip while wrap-around lead holders keep leads at the ready.

The Multimeter is rated CAT III 600V and conforms to UL 61010-1 and certified CAN/CSA C22.2.

The pouch is made from rugged, abrasion-resistant fabric and features a mesh pocket on the interior lid, and elastic loops on the interior base. The pouch has a double slider zipper closure. The rear of the pouch features Velcro Hook and two MOLLE straps with snaps to provide a variety of attachment options.

- 1x Multimeter w/test leads
- 1x Insulated Screwdriver Set
- 1x Wire Stripper/Crimper Tool
- 1x NCV Tester
- Internal Pouch 22

Note:

- The Multimeter requires 2x AAA batteries (not included).

Dimensions (L x W x H):	180mm x 180mm x 75mm	7” x 7” x 3”
Weight:	0.95kg	2.09lb

GLUE GUN MODULE



P/N 8005335

The GT12M Glue Gun heats up fast and features a removable cord allowing it to be used cord free for up to 5 minutes before having to reheat.

While the cordless operation provides the freedom to use the tool without the limitation of an electric cord, there is also the flexibility of corded continuous use. Uses 8mm glue sticks.

The glue gun is supplied with glue sticks.

The Internal Pouch 12 is made from rugged, abrasion-resistant fabric and features a mesh pocket on the interior lid, and elastic loops on the interior base. The pouch has a double slider zipper closure. The rear of the pouch features Velcro Hook and two MOLLE straps with snaps to provide a variety of attachment options.

- 1x Cordless Glue Gun
- 6x Glue Sticks
- Internal Pouch 12

Dimensions (L x W x H):	90mm x 180mm x 75mm	3.5" x 7" x 3"
Weight:	0.55kg	1.21lb

TAPE, GLUE & TIE MODULE



P/N 8004484

This module includes a range of adhesive, tape and ties with varied uses whether securing items, stabilisation, temporary fix, etc.

This pouch is made from rugged, abrasion-resistant fabric, and features mesh pockets on the interior lid, and elastic loops on interior rear, which is lined with Hook and Loop for attachment of smaller pouches. The pouch has a double slider zipper closure. The rear of the pouch features MOLLE straps with snaps for attachment to a carrier. A removable adjustable shoulder strap allows the pouch to be used as a separate carrier. The rear side seams have an open-end zipper to facilitate attachment to additional 50 series pouches to form a larger pack.

- 10x Electrical Tape
- 650x Cable Ties (assorted)
- 6x Duct Tape (2")
- 3x Super Glue
- 3x Epoxy (twin tube)
- External Pouch 52

The contents of this module are delivered in bulk; the External Pouch 33 is intended to be used for carrying a smaller quantity needed on a mission.

Dimensions (L x W x H):	450mm x 120mm x 75mm	17.7" x 4.7" x 3"
Weight:	7.30kg	16.09lb

CARRIERS
**POUCHES
& PACKS**



POUCHES

POUCHES & PACKS



The Internal Pouches, External Pouches and Tool Rolls contain the Module components. Each Module's pouch has been developed and selected based on the specific length, width and height of that component's set of items. This optimizes the carrying capacity and minimizes wasted space.

BombTec also includes a variety of larger carriers for carrying and storing equipment. Most Pouches fit neatly inside a Backpack, Hard Case or Leg Bag, using Velcro.

All pouches have MOLLE straps and most have Velcro Loop backing, providing the flexibility to affix modules to the interior or exterior of the BombTec Backpack, to MOLLE loops on Med-Eng Bomb Suits, or onto to most other tactical equipment.



Example of how users can fit pouches into BombTec carriers using Velcro based on personal preference for a given mission or storage.

POUCHES



P/N 8004868

INTERNAL POUCH 10

This pouch is made from rugged, abrasion-resistant fabric. The pouch has a double slider zipper closure. The rear of the pouch features Velcro Hook and two MOLLE straps with snaps to provide a variety of attachment options.

Dimensions: 100mm x 50mm x 50mm (4" x 2" x 2").
Weight: 0.5kg (0.11lb).



P/N 8004869

INTERNAL POUCH 11

This pouch is made from rugged, abrasion-resistant fabric and features a mesh pocket on the interior lid, and elastic loops on the interior base. The pouch has a double slider zipper closure. The rear of the pouch features Velcro Hook and two MOLLE straps with snaps to provide a variety of attachment options.

Dimensions: 125mm x 100mm x 75mm (5" x 4" x 3").
Weight: 0.8kg (0.18lb).



P/N 8004870

INTERNAL POUCH 12

This pouch is made from rugged, abrasion-resistant fabric and features a mesh pocket on the interior lid, and elastic loops on the interior base. The pouch has a double slider zipper closure. The rear of the pouch features Velcro Hook and two MOLLE straps with snaps to provide a variety of attachment options.

Dimensions are 90mm x 180mm x 75mm (3.5" x 7" x 3").
Weight: 0.1kg (0.22lb).



P/N 8004872

INTERNAL POUCH 14

This pouch is made from rugged, abrasion-resistant fabric and features a mesh pocket on the interior lid, and elastic loops on the interior base. The pouch has a double slider zipper closure. The rear of the pouch features Velcro Hook and two MOLLE straps with snaps to provide a variety of attachment options.

Dimensions: 90mm x 360mm x 75mm (3.5" x 14" x 3").
Weight: 0.18kg (0.40lb).



P/N 8004982

INTERNAL POUCH 22

This pouch is made from rugged, abrasion-resistant fabric and features a mesh pocket on the interior lid, and elastic loops on the interior base. The pouch has a double slider zipper closure. The rear of the pouch features Velcro Hook and two MOLLE straps with snaps to provide a variety of attachment options.

Dimensions are 180mm x 180mm x 75mm (7" x 7" x 3").
Weight: 0.17kg (0.37lb).

POUCHES



P/N 8004985

INTERNAL POUCH 24

This pouch is made from rugged, abrasion-resistant fabric, and features mesh pockets on the interior lid, and elastic loops on interior base. The pouch has a double slider zipper closure. The rear of the pouch features Hook and Loop, and two MOLLE straps with snaps to provide a variety of attachment options.

Dimensions: 180mm x 360mm x 75mm (7" x 14" x 3"). Weight: 0.21kg (0.46lb).



P/N 4985930

EXTERNAL POUCH 33

This pouch is made from rugged, abrasion-resistant fabric, and features a pass-through sleeve on the interior lid. The interior base has plenty of room and features a drawstring closure. Side closure zippers can be opened to allow the pouch depth to expand from 64mm (2.5") to 127mm (5") to accommodate larger equipment if required. The rear of the pouch features four MOLLE straps with snaps to provide a variety of attachment options, and the pouch is secured with two side release buckles.

Dimensions: 279mm x 127m 254mm (11" x 5" x 10") at maximum opening.
Weight: 0.36kg (0.79lb).



P/N 8004991

EXTERNAL POUCH 52

This pouch is made from rugged, abrasion-resistant fabric, and features mesh pockets on the interior lid, and elastic loops on interior rear, which is lined with Hook and Loop for attachment of smaller pouches. The pouch has a double slider zipper closure. The rear of the pouch features MOLLE straps with snaps for attachment to a carrier. A removable adjustable shoulder strap allows the pouch to be used as a separate carrier. The rear side seams have an open-end zipper to facilitate attachment to additional 50 series pouches to form a larger pack.

Dimensions: 450mm x 120mm x 75mm (17.7" x 4.7" x 3"). Weight: 0.32kg (0.71lb).



P/N 8005001

EXTERNAL POUCH 53

This pouch is made from rugged, abrasion-resistant fabric, and features mesh pockets on the interior lid, and elastic loops on interior rear, which is lined with Hook and Loop for attachment of smaller pouches. The pouch has a double slider zipper closure. The rear of the pouch features MOLLE straps with snaps for attachment to a carrier. A removable adjustable shoulder strap allows the pouch to be used as a separate carrier. The rear side seams have an open-end zipper to facilitate attachment to additional 50 series pouches to form a larger pack.

Dimensions: 450mm x 200mm x 75mm (17.7" x 7.9" x 3"). Weight: 0.8kg (1.76lb).



P/N 8005000

EXTERNAL POUCH 61

This pouch is made from rugged, abrasion-resistant fabric, and features a mesh pocket on the interior rear. The pouch has a double slider zipper closure. The rear of the pouch features MOLLE straps with snaps for attachment to a carrier.

Dimensions: 550mm x 66mm x 75mm (21.7" x 2.6" x 3"). Weight: 0.19kg (0.42lb).

CARRY BAGS



P/N 8005003

BOMBTEC BACKPACK

The BombTec Backpack is the main carrier for the BombTec modular system. Its ergonomic design with padded backing fits over protective vests & plate carriers with purpose-built shoulder straps and waistband. The clamshell front zipper-lid permits the pack to be opened while standing upright, exposing a hook-and-loop (looped) interior as the attachment surfaces for the module pouches in both the main compartment and the interior of the lid.

The exterior of the pack features top and bottom cargo handles for additional carry points. The front and both sides are fitted with standard MOLLE attachment points for the External Pouches of the BombTec modular system and end-user MOLLE compatible equipment.

Dimensions: 565mm x 387mm x 229mm (22.25" x 15.25" x 9").

Weight: 2.72kg (6.00lb).



P/N 4975045

LEG BAG

The Leg Bag provides the ability to carry the small items, such as the HAL Tactical tools, in an easily accessible location without impeding the user's mobility. The main zipper compartment houses small pouches which may be repositioned across the Velcro-lined surface to suit individual requirements. In addition, the Leg Bag includes several external pockets with Velcro closures. These are ideal for frequently accessed tools. It also has an array of elastic MOLLE straps.

Dimensions: 250mm x 190mm x 125mm (10" x 7.5" x 5").

Weight: 1.00kg (2.21lb).



P/N 8005236

HARD CASE

The Hard Case is a rugged, hinged plastic case with a deep base and lid. The interior (base and lid) is extensively lined with Velcro® to enable the pouches to be secured. The user has complete freedom to place the pouches in the base or lid as they choose.

Size: 1391mm x 419mm x 151mm (55.7" x 16.5" x 5.9")

Weight 9.5kg (20.94lb)

CARRY BAGS



P/N 8002106

DUFFLE BAG

This cotton canvas bag is equipped with traditional duffel bag looped handles and includes shoulder straps. Made of cotton canvas, it features a rubberized bottom both inside and out to help keep equipment dry on wet ground. The bag has numerous pockets for large and small items both on the exterior and interior of the bag, with zippered closure.

Dimensions: 864mm x 382mm x 305mm (34" x 15" x 12").

Weight: 2.00kg (4.41lb).



P/N 4011985

SMALL DUFFLE BAG

The Small Duffel Bag is made from rugged, abrasion-resistant fabric, and features 1 exterior zip-off pocket, 1 outside end zipper compartment and U-shape top zipper opening, with a Velcro extension flap to ensure secure closure and two durable wrap-around handles. The underside features a rubber panel for protection with exterior bottom feet protectors. The bag has an adjustable/detachable shoulder strap with swivel buckles.

Dimensions: (559mm x 241mm x 279mm) (22" x 9.5" x 11").

Weight: 1.15kg (2.54lb).



P/N 0183002

REEL BAG

This is a robust protective bag, fitted with a clear plastic viewing window to give the operator an instant of what colour line is inside without having to open the bag. It also has a pair of external pockets.

This bag can be used as a carry bag to bring tools downrange.

Dimensions: 394mm x 330mm x 197mm (15.5" x 13" x 7.75").

Weight: 1.12kg (2.247lb).

TOOL ROLLS



P/N 0502406

TOOL ROLL STANDARD

This tool roll is made from rugged, abrasion-resistant fabric, and features two (2) side release buckles to hold the roll closed. Inside, deep pockets of varying sizes are used to hold the components in place.

Dimensions (Unrolled): 970mm x 455mm (38" x 18").
Weight: 0.68kg (1.50lb).



P/N 4985928

TOOL ROLL LONG

This tool roll is made from rugged, abrasion-resistant fabric, and features an adjustable shoulder strap, and three (3) side release buckles to hold the roll closed. Inside, deep pockets with elastic webbing provide easy access to tools, and Velcro loops help to hold them in place. There is a strip of Velcro loop for attachment of a pouch. Velcro strips along the sides allow attachment of multiple tool rolls in tandem to form a larger roll.

Dimensions (Unrolled): 900mm x 470mm (35" x 18.5").
Weight: 0.74kg (1.63lb).



Tool Roll Long shown with Dropdown Extension attached, to the Entry Tool Module for demonstration purposes.

TOOL ROLL DROPDOWN EXTENSION



P/N 8005002

This extension is made from rugged, abrasion-resistant fabric, and features webbing straps that attach to the Tool Roll Long so that it hangs below to form a seat for tool heads that are too large to fit inside the roll.

Dimensions (Unrolled): 292mm x 178mm (11.5" x 7").
Weight: 0.12kg (0.26lb).



P/N 8005084

TOOL ROLL SMALL

This pouch is made from rugged, abrasion-resistant fabric, and features twelve (12) tool slots on the inside and MOLLE loops on the rear for attachment purposes.

Dimensions (Unrolled): 457mm x 280mm (18" x 11").
Weight: 0.12kg (0.26lb).



To discuss a BombTec solution that's right for your team,
please contact your authorized Med-Eng representative.
med-eng.com // Med-EngSales@safariland.com
United States & Canada 1.855.633.3649 // International 1.613.482.8835